

Papillon  
Round Beaded Bead  
a tutorial  
by Sharri Moroshok



**A Peyote Stitch Project  
For Intermediate Beaders**

(c)2016 Sharri Moroshok

[www.TheBeadedBead.etsy.com](http://www.TheBeadedBead.etsy.com)



## Papillon Round Beaded Bead

**Materials List:** *(quantities listed are for 1 beaded bead)*

**15/0 Miyuki seed beads (1 gram)**

**Czech SuperDuo Duet beads (50 beads)**

**Czech True2mm Round Druk beads (24 beads)**

**Fireline (4 lb test)**

**Size 11 or 12 beading needle**

**12mm round unfinished wood bead**

**Color Key:**

**#1 = Czech True2mm Round Druk (Travertine)**

**#2 = Czech SuperDuo Duet (Turquoise/Ivory)**

**#3 = 15/0 Miyuki seed bead (15-9457L metallic lt. bronze)**



This project may be taught  
and distributed exclusively by  
customers of the BeadSmith.

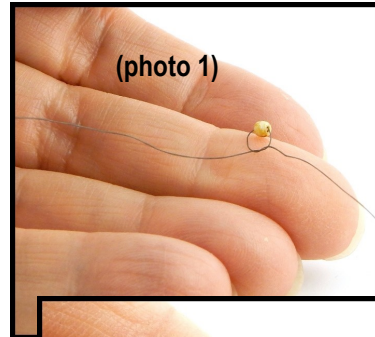
[www.beadsmith.com](http://www.beadsmith.com)

[www.TheBeadedBead.etsy.com](http://www.TheBeadedBead.etsy.com)

## Papillon Round Beaded Bead

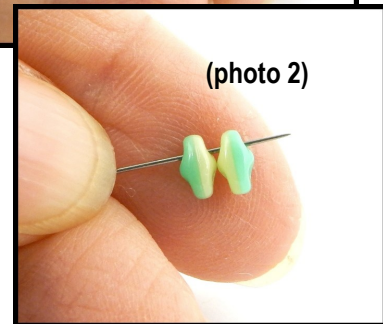
### Getting started

Tie one #1 (True2mm Druk) bead on at the mid point of 2 yards of thread. Use a simple overhand knot. Thread one end onto your beading needle. **(photo 1)**



Then string on:

- 2 #2 (SuperDuo Duet) beads - pick up the first #2 bead on the turquoise side and the second #2 bead on the Ivory side **(photo 2)**
- 1 #1 (True2mm Druk) bead

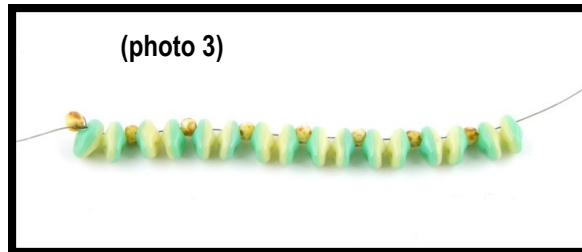


**Repeat this pattern 6 more times**

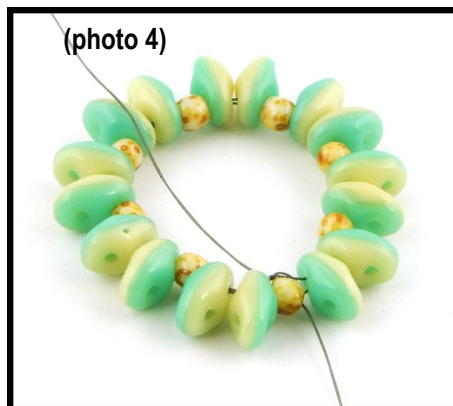
Then string on:

- 2 #2 (SuperDuo Duet) beads in the same way - first the Turquoise side then the Ivory side

**Total = 24 beads**  
**(photo 3)**



**Close a circle by passing the thread back through the tied on bead and then pass the thread all the way through the circle of beads exiting thread through the tied on bead.**  
**(photo 4)**



## Beginning the 1st side of your beaded bead

You will be working off the base bead.

### Row 1

With the circle of beads on a fingertip, flip the pair of SuperDuos adjacent to where your thread is exiting. (photo 5a)

Pick up:

- 2 #2 beads (SuperDuos) - picking them up as before, 1st bead on the Turquoise side, 2nd bead on the Ivory side

Then stitch through the next adjacent #1 bead (True2mm Druk) (photo 5b)

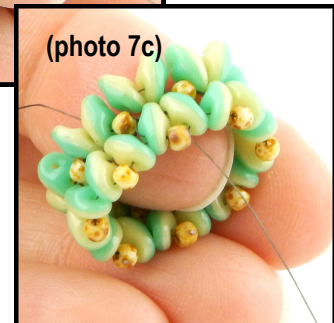
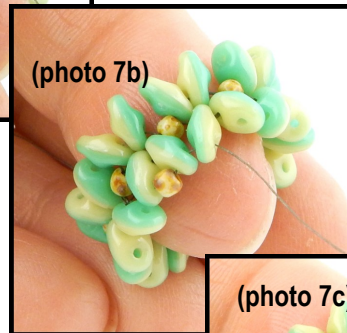
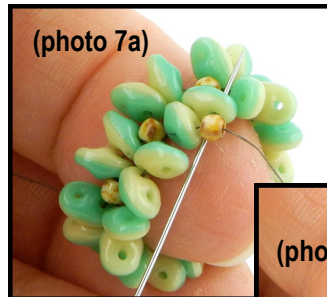
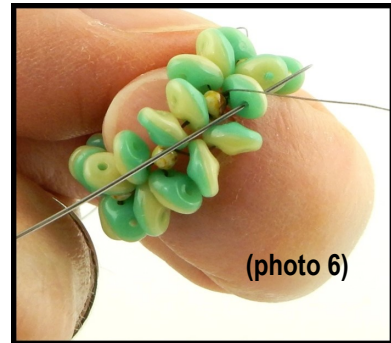
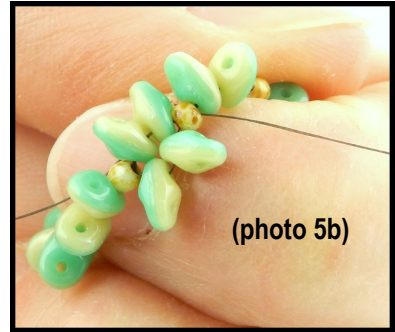
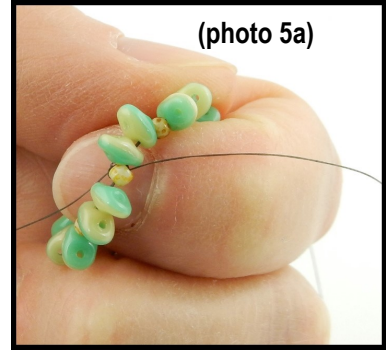
(photo 5b)

Repeat this pattern 7 more times

Without adding a bead, stitch completely around the circle, stitching through the pairs of SuperDuos you have just added. Pull the True2mm Druks more up into the middle between the opposing pairs of SuperDuos. Pull the thread quite tight.

Exit the thread again through the tied on bead.

Then, without adding a bead, stitch through the top hole of the next adjacent SuperDuo. (photo 6)



### Row 2

Stitch:

- 1 #1 bead (True2mm Druk)  
in the space between the top holes of the SuperDuos (photo 7a)

Then, without adding a bead, stitch through the top hole of the next adjacent SuperDuo (photo 7b)

Repeat this pattern 7 more times

Step up through a #1 (True2mm Druk) (photo 7c)

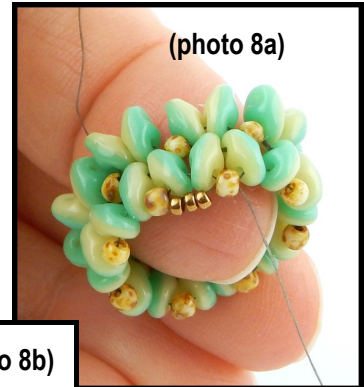
**Row 3**

Stitch:

3 #3 beads (15/0) stitching through the next adjacent #1 bead (True2mm Druk) **(photo 8a)**

Repeat 7 more times

Step up through three #3 beads (15/0) **(photo 8b)**



Continue holding beadwork on a fingertip

**Row 4**

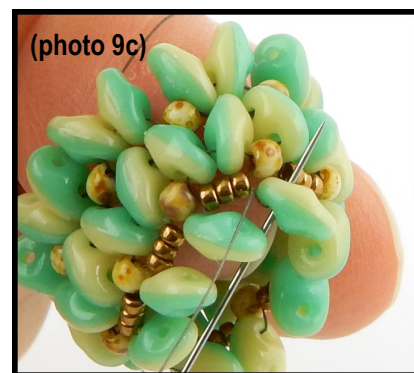
Stitch:

1 #2 bead (SuperDuo) picking up the bead on the Turquoise side and stitching through the next adjacent three #3 beads (15/0) **(photo 9a)**

1 #2 bead (SuperDuo) picking up the bead on the Ivory side and stitching through the next adjacent three #3 beads (15/0) **(photo 9b)**

Repeat this pattern 3 more times

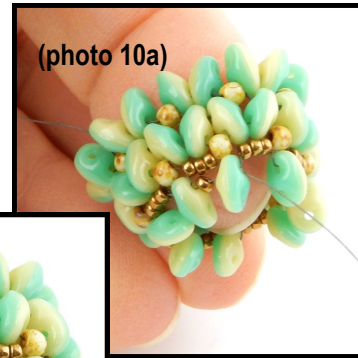
Step up through the bottom hole of the next adjacent #2 bead (SuperDuo) **(photo 9c)**



## Row 5

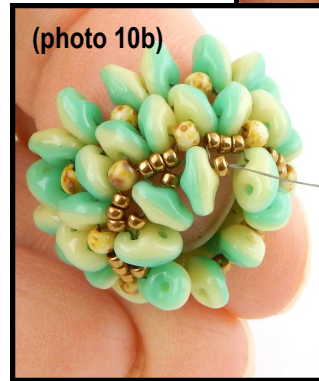
Stitch:

- 1 #3 bead (15/0) stitching through the bottom hole of the next adjacent SuperDuo (**photo 10a**)



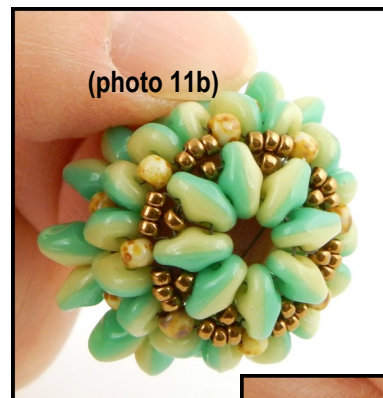
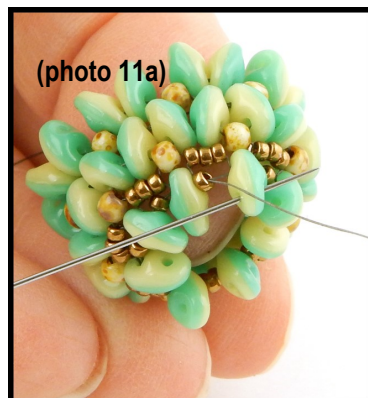
Repeat 7 more times

- Step up through a #3 bead (15/0) (**photo 10b**)



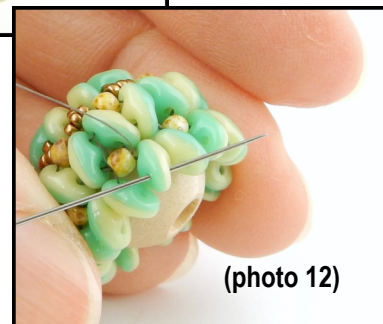
Tug thread tight. Without adding a bead, stitch through the top hole of the next adjacent SuperDuo. (**photo 11a**)

Then stitch through the top hole of all 7 more Pull thread tight. Stitch again through the top holes of all 8 superDuos to firm them up more. Weave the thread back through the beadwork until secure and then cut off flush. (**photo 11b**)



Flip the beadwork. Then stitch back through the tied on bead if necessary to set your thread to travel in your preferred working direction.

Without adding a bead, stitch through the top hole of the next adjacent #2 bead (SuperDuo). Slide the beadwork onto the base bead. (**photo 12**)



The beadwork will seem a little big for the base bead. The base bead may shift a bit as you work. You can keep the hole of the base bead centered with your needle.

Repeat Rows 2 - 5 (pages 4 – 6)

Finish as you did on the first side of the beaded bead by stitching reinforcing rounds of thread through the top holes of the final Row of Super Duos. Weave this thread through the beadwork until secure and cut off flush.

[www.TheBeadedBead.etsy.com](http://www.TheBeadedBead.etsy.com)