



## WHEEL OF TIME BRACELET AND EARRINGS

by RANGASHRII SANTHANAM

www.shriidesignsllc.com



Shrii Designs



**Project Level:** Intermediate and up

**Techniques Used:** Bead weaving with multi hole beads and netting stitch

**Finished Size:** 6.75 inches with clasp

### MATERIALS

4g size 11° seed beads

30 size 8° seed beads

6 size 14mm Rivoli

30 BowTie beads

42 size 3mm Fire polished rounds

60 Paisley Duos

1 LAOUTI Cymbal™ magnetic clasp

Pair of ear wires with a loop

2 size 5mm jump rings (optional)

6lb. Fireline™/D weight beading thread

Size 12 beading needles

Scissors/Pliers

### DESIGNER TIPS:

- Check that all holes in any multi-hole bead are clear before stitching.
- The Paisley Duos have a tip and wide end, and a concave and convex curve.
- The BowTie beads have three holes. The holes are designated as bottom, middle and top.

Please respect my designs by not reselling or altering my patterns in any way. Do not replace or modify text, images, names, logos, or URLs. Feel free to recreate this design for personal use and limited sales but not for mass production. Permission to teach this pattern is exclusive to customers of the Beadsmith.

## COMPONENT (make 6)

### FIGURE 1

**Step 1.** Add 40 inches of thread to a needle and leave an eight-inch tail. String one BowTie (bottom hole) and one 8° six times. Reinforce the thread path once more by sewing through all beads again forming a ring. Knot the working and tail thread. Thread a needle on the tail.

### FIGURE 2

**Step 2.** With the tail exiting an 8°, string two 11°, one, 8°, two 11° and sew through the next 8° of the ring. Go back up the last 11° you just added (Fig. 2.1). Pick up one 11°, one 8°, two 11° and sew through the next 8° in the ring. **NOTE:** Each loop will share an 11° with the loops on either side of it. Repeat four more times (Fig. 2.2). On the last repeat, the sixth 8°, string one 11°, one 8°, one 11° and sew through the first 11° of the first loop and continue the first 8° of the ring. Step up to exit the middle 8° added in this step (Fig. 2.3).

### FIGURE 3

**Step 3.** String one 11° and sew through the next middle 8°. Repeat all the way around and reinforce the thread path once more. Tie a couple of half-hitch knots and trim the tail thread. The back of the bezel is complete.

### FIGURE 4

**Step 4.** Using the working thread, and exit an 8° of the ring, String three 11°, one 3mm, three 11° and sew through the next 8° (Fig. 4.1). Repeat all the way around and step up to exit the 11°-3mm-11° bead set. Figure 4.2.

### FIGURE 5

**Step 5.** Sew through the next 11°-3mm-11°. Do not add any beads. Place the Rivoli in the bezel face up and reinforce the thread path twice by sewing through each set 11°-3mm-11°. Step up down to come out of the BowTie. Sew through the middle hole of the BowTie (Fig. 5.2).

### FIGURE 6

**Step 6.** String 11°, one Paisley (concave, tip hole), one 11°, one Paisley (convex, tip hole), one 11° and sew through the next BowTie (Fig. 6.1). Do not pull the thread tight. Repeat this step all the way around and exit the BowTie. Step up and reverse the thread direction by sewing through the top hole of the bowtie (Fig. 6.2). DO NOT reinforce this step.

### FIGURE 7

**Step 7.** Continue through the top hole of the first Paisley added in Step 6. String one 11° and sew through the next Paisley-BowTie-Paisley set (Fig. 7.1). Repeat this step all the way around (Fig. 7.2). Reinforce this thread path, secure the thread and trim excess. This completes the first component.

## CONNECT BRACELET COMPONENTS

### FIGURE 8

**Step 8.** Secure a new 12-inch length of thread into a component and exit the 11° between two Paisleys. String one 11°, one 3mm, one 11° and sew through the next 11°-Paisley-BowTie-Paisley-11° of a second component. String one 11°, one 3mm, one 11° and sew back through the 11°-Paisley-BowTie-Paisley-11° of the first component. Reinforce the thread path twice more and secure the thread with half-hitch knots and trim it (not shown).

Repeat Step 8 to attach four components.

Please respect my designs by not reselling or altering my patterns in any way. Do not replace or modify text, images, names, logos, or URLs. Feel free to recreate this design for personal use and limited sales but not for mass production. Permission to teach this pattern is exclusive to customers of the Beadsmith.

## ATTACH THE CLASP

### FIGURE 9

**Step 9.** Secure a new 10-inch length of thread into a component and exit the BowTie of an end component. String three 11°, one half of the LAOUTI clasp, three 11°s and sew back through the BowTie. Reinforce the thread path twice more and weave in the thread, secure with half-hitch knots and trim it. Repeat this step to attach the other half of the clasp to the other end of the bracelet. The bracelet is complete.

## EARRINGS

### FIGURE 10

**Step 10.** Secure a new 10-inch length of thread into a component and exit the 11° between two Paisleys. String two 11°, an ear wire, two 11°s and sew back through the 11° originally exited (Fig. 10.1). Reinforce the thread path once more. Step up to exit the first 11° added in this step. String one 11° and sew through the next 11°, the ear wire and 11°. String one 11° and sew through the bottom 11° (Fig. 10.2). Weave in the thread, secure with half-hitch knots and trim excess. Make the second earring.

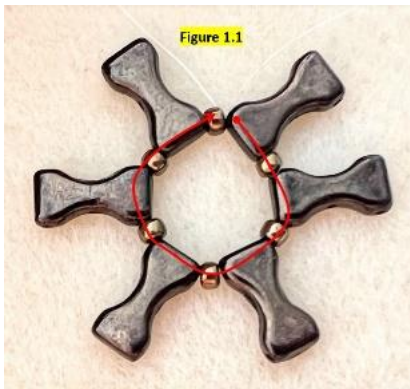


FIGURE 1



FIGURE 2.1

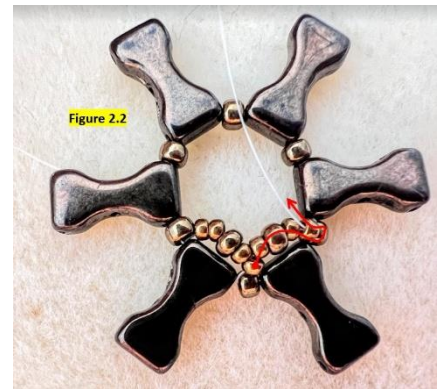


FIGURE 2.2



FIGURE 2.3



FIGURE 3



FIGURE 4.1

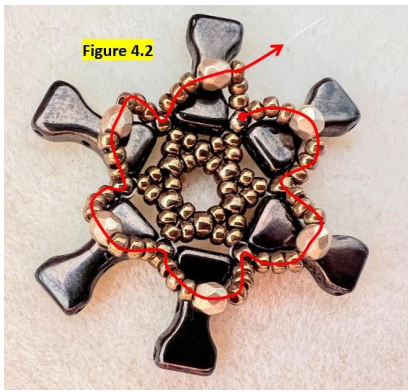


FIGURE 4.2



FIGURE 5.1

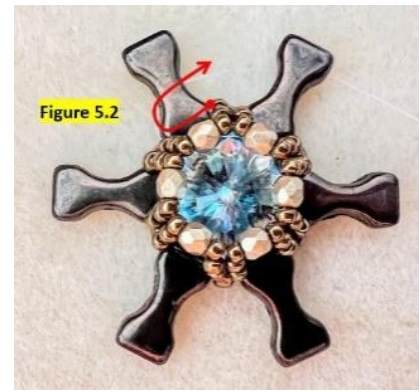


FIGURE 5.2



FIGURE 6.1

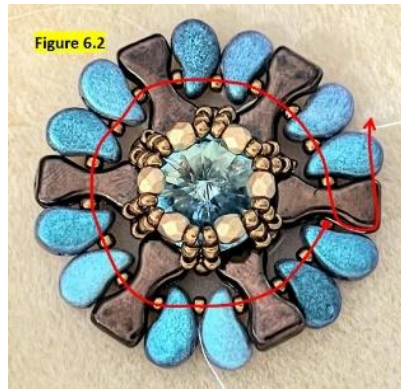


FIGURE 6.2



FIGURE 7.1

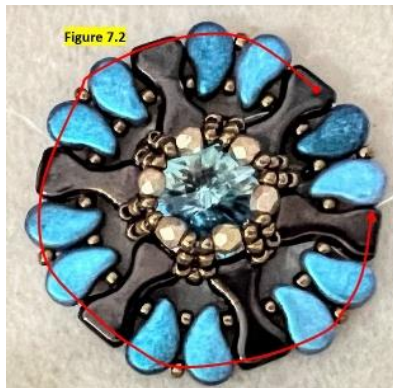


FIGURE 7.2

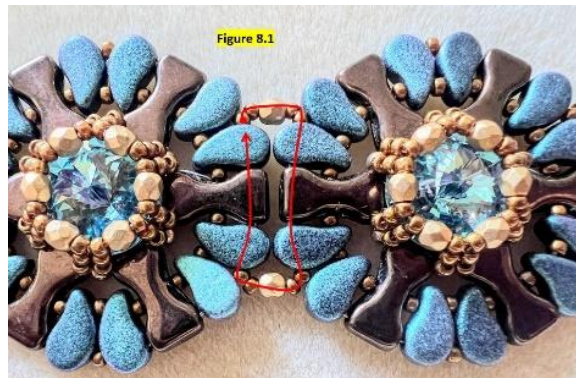


FIGURE 8

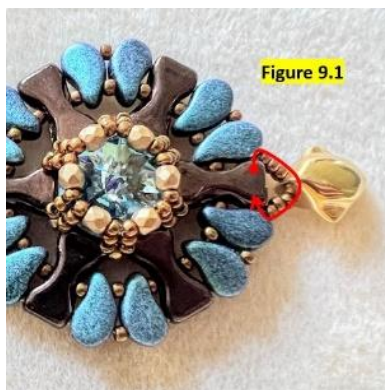


FIGURE 9



FIGURE 10.1



FIGURE 10.2

Please respect my designs by not reselling or altering my patterns in any way. Do not replace or modify text, images, names, logos, or URLs. Feel free to recreate this design for personal use and limited sales but not for mass production. Permission to teach this pattern is exclusive to customers of the Beadsmith.