

JOSEPHINE BRACELET

by Carolyn Cave
www.ladybeadledesigns.com



Skill level: Intermediate

Finished Size: beadwork only 6 ¼ inches (16cm)

Techniques: Circular bead netting

MATERIALS

2g size 15° seed beads

4g size 11° seed beads

4g size 8° seed beads

5g size 8 Delica beads

2 KOLYMPUS Cymbal™ SuperDuo endings

18 Baroque cabochons

10-12mm Toggle clasp set

2 size 5mm jump rings (18ga)

Size 10 or 12 beading needle

D weight beading thread

Scissors or thread cutters

Two pairs of pliers (to work jump rings)

NOTE

- It is easy to adjust the length of this bracelet by stitching more or fewer components. Each component changes the length by 3/4 inch (18mm).
- The components are added one at a time but use continuous thread. End the tails and working threads and add more whenever it is needed. One length of the bracelet is made first and the second length is added to it.

FIRST LENGTH

FIRST COMPONENT, UPPER LEFT CORNER

Cut a long piece of beading thread and attach a needle to one end. To prepare, lay one baroque cabochon bead face up on your work surface with the holes running vertically.

FIGURE 1

Step 1. Pick up one size 8 Delica. Sew through the left-hand hole of the cabochon, from the top. Pick up one Delica. Sew through the right-hand hole of the cabochon, from the bottom. Sew again through the first Delica picked up, in the same direction. Slide the beads towards the end of the thread leaving a short tail. Sew along the thread path for a second time and continue through the first Delica for a third time. Pull the thread snug (**green thread**).

FIGURE 2

Step 2. Pick up three Delicas and sew through the Delica opposite the one the thread is exiting. Pick up three Delicas and sew through the Delica that the thread was exiting at the start of this step (**purple thread**).

FIGURE 3

Step 3. Pick up one size 8° seed bead and sew through the next Delica, eight times (**orange thread**).

FIGURE 4

Step 4. Pick up one 15° seed bead and sew through the next Delica, three times. Sew through the next Delica. Pick up one 15° and sew through the next Delica, three times. Sew through the next Delica. To be in the correct place to start the next step, sew through the next 8° (**blue thread**). **NOTE:** Only six 15°s have been added, not eight as you might expect. The gaps point to the top and bottom of the component. Keep this in mind when adding subsequent components.

FIGURE 5

Step 5. Pick up three size 11° seed beads and sew through the next 8°, eight times. To be in the correct place to start the next step, sew through the first three 11°s added in this round (**pink thread**).

FIGURE 6

Step 6. Pick up two 15° and sew through the next three 11°s, two times (**pink thread**). Sew through the 8° that is at the lower end of the component and the first 11° in the next group of three. Pick up one 15°, one 11°, one 8°, one 11° and one 15°. Sew back through the third 11° in the group of three nearest the 8° at the lower end of the component, the 8° itself and the next group of three 11°s. Pick up two 15°s and sew through the next three 11°s (**blue thread**).

Stitch the blue thread path once more (**orange thread**). These two small extensions just made will be used to join components beside and below the current one. Pick up two 15°s and sew through the next three 11°s, two times (**green thread**).

Step 7. Sew along the thread path made in Step 6 until the thread exits the first 8° added as part of the extension (**purple thread**). Make sure the thread is heading in the same direction (counterclockwise) as it did in Step 1. The second component is attached below the first.

SECOND COMPONENT

FIGURE 7

Step 8. Pick up one Delica. Sew through the left-hand hole of the cabochon, from the top. Pick up one Delica. Turn around and sew through the right-hand hole of the cabochon bead, from the bottom. Sew again through the first Delica picked up, in the same direction. Slide the beads towards the 8° on the first component till the first Delica sits snugly beside the 8°. Sew along the thread path for a second time and continue through the first Delica for a third time. Pull the thread snug (**green thread**).

FIGURE 8

Step 9. Pick up three Delicas and sew through the Delica opposite the one the thread is exiting. Pick up three Delicas and sew through the Delica that the thread was exiting at the start of this step (**purple thread**).

FIGURE 9

Step 10. Pick up one 8° and sew through the next Delica, seven times. Sew through the 8° on the extension below the first component from which the thread was leaving in Step 7 and the next Delica (**orange thread**).

FIGURE 10

Step 11. Stitch Step 4 (**blue thread**).

FIGURE 11

Step 12. Pick up three 11° and sew through the next 8°, six times. Pick up two 11°s. Sew through the 11°, 8° and 11° in the extension at the lower end of the first component. Pick up two 11°s and sew through the next 8°. To be in the correct place to start the next step, sew through the first three 11°s added in this round (**pink thread**).

FIGURE 12

Step 13. Pick up two 15° and sew through the next three 11°s, two times (**pink thread**). Sew through the 8° that is at the lower end of the component and the first 11° in the next group of three. Pick up one 15°, one 11°, one 8°, one 11° and one 15°. Sew back through the third 11° in the group of three nearest the 8° at the lower end of the component, the 8° itself and the next group of three 11°s. Pick up two 15°s and sew through the next three 11°s (**blue thread**).

Stitch the blue thread path once more (**orange thread**). The two small extensions just made will be used to join components beside and below the current one. Sew through the 8° on the previous component and the next three 11°s. Pick up two 15°s and sew through the next three 11°s (**green thread**).

Step 14. Sew along the thread path made in Step 6 until the thread exits the first 8° added as part of the extension (**purple thread**). Make sure the thread is heading in the same direction (counter-clockwise) as in Step 1.

THIRD AND MORE COMPONENTS

Step 15. Continue adding components below the first component following Steps 8 through 14 until you have stitched a total of eight components. **NOTE:** If your bracelet needs to be longer or shorter than mine, this is the place where you would stitch more or fewer components, but always one less than the actual length you need.

LAST COMPONENT

Step 16. Stitch Steps 8 through 12 as previously. This last component will need only one extension on the right-hand side.

FIGURE 13

Step 17. Pick up two 15°s and sew through the next three 11°s, four times (**pink thread**). Sew through the 8° that is on the right side of the component and the first 11° in the next group of three. Pick up one 15°, one 11°, one 8°, one 11° and one 15°. Sew back through the third 11° in the group of three nearest the 8° on the right side of the component, the 8° itself and the next group of three 11°s. Pick up two 15°s and sew through the next three 11°s (**orange thread**). Sew through the 8° on the current component and the next three 11°s. Pick up two 15°s and sew through the next three 11°s (**green thread**).

Step 18. Sew along the thread path around the edge until the thread exits the first 8° added as part of the extension (**purple thread**). Make sure the thread is heading in the same direction (counterclockwise) as it did in Step 1.

SECOND LENGTH

First Component and Clasp Loop

Step 19. Give the work a quarter turn counterclockwise so that the bracelet is lying horizontally, and the last component stitched is on the left.

FIGURE 14

Step 20. Stitch Steps 8 through 12 as previously.

FIGURE 15

Step 21. Pick up two size 15°s and sew through the next three 11°s, four times (**pink thread**). Sew through the 8° that is on the right side of the component and the first 11° in the next group of three. Pick up one 15°, one 11°, one 8°, one 11° and one 15°. Sew back through the third 11° in the group of three nearest the 8° on the right side of the component, the 8° itself and the next group of three 11°s. Pick up two 15°s and sew through the next three 11°s (**orange thread**). **NOTE:** There is only one extension on this component.

Sew through the 8° on the previous component, the next 11°, the 15° between the two components and the 11° up towards the left on the previous component. Pick up one KOLYMPPOS ending. Sew through

the corresponding 11° on the current component, the 15° between the two components, the 11°, 8° and 11° on the previous component, the 15° between them, the 11°, 8° and 11° used to join the two components and the next two 11°s (**green thread**). The thread will have made a path in the shape of the number 8. Pick up two 15°s and sew through the next three 11°s (**blue thread**).

Step 22. Sew along the thread path around the outside edge until the thread exits the first 8° added as part of the extension (**purple thread**).

SECOND COMPONENT

Step 23. Give the work another quarter turn counterclockwise so that the main length of the bracelet is now vertical, and the component just stitched is on the left. The thread should be leaving the lower end of the component just stitched heading counterclockwise.

Step 24. Stitch Steps 8 through 12 as previously.

FIGURE 16

Step 25. Pick up two 15°s and sew through the next three 11°s, two times (**pink thread**). Sew through the 8° that is at the lower end of the component and the first 11° in the next group of three. Pick up one 15°, one 11°, one 8°, one 11° and one 15°. Sew back through the third 11° in the group of three nearest the 8° at the lower end of the component, the 8° itself and the next group of three 11°s. Pick up two 15°s and sew through the next three 11°s, the 8°, and three 11°s. Pick up two 15°s and sew through the next two 11°s (**blue thread**). Some of the beads sewn through will be in the extension from the component to the right.

At this point four components have come together. To make the hollow area between them secure, we will stitch around the inside perimeter. Sew through the 15° between the two components, two 11°s, two 15°s and two 11°s. Repeat three more times. Continue sewing along the edge of the current component, through one 11°, 8° and three 11°s (**purple thread**). Pick up two 15°s and sew through the next three 11°s (**green thread**).

Step 26. Sew along the thread path made in Step 6 until the thread exits the first 8° added as part of the extension (**orange thread**). Make sure the thread is heading in the same direction (counterclockwise) as it did in Step 1.

THIRD AND MORE COMPONENTS

Step 27. Continue adding components below the first following Steps 8 through 12, 25 and 26 until you have stitched a total of eight components attached to the first nine. Do not forget to sew around the “hole” created by each group of four components.

LAST COMPONENT

Step 28. The last component will not need an extension.

FIGURE 17

Step 29. Pick up two 15°s and sew through the next three 11°s, four times (**pink thread**). Sew through the 8°, next 11°, the 15° between the two components, the 11° to the right on the first component, the

8°, the next 11°, the 15° between the two components, and the next 11° heading towards the outside edge of the work. Pick up one KOLYMPOS. Sew through the corresponding 11° on the first component, the 15° between the two components, the 11° and 8° on the current component and the next three 11°s. Pick up two 15°s and sew through the next two 11°s (**green thread**). The thread will have made a path in the shape of the number 8.

Once again, four components have come together. Sew around the inside perimeter, through the 15° between the two components, two 11°s, two 15°s and two 11°s. Repeat three more times. Continue sewing along the edge of the current component, through one 11°, 8° and three 11°s (**purple thread**). Pick up two 15°s and sew through the next three 11°s (**orange thread**).

FIGURE 18

Step 30. Sew along the outer edge of the component, through repeating groups of two 15°s and three 11°s, until the thread is exiting the first 11° beside the KOLYMPOS. Sew through one 11° heading towards the outer edge of the work. **NOTE:** In my bracelet there was quite a bit of space on either side of the KOLYMPOS. In order to stabilize the finding, it may be necessary to add one 15° on either side of the KOLYMPOS when stitching.

Continue sewing around the outside of the work till you reach the 15° between two components. Sew through this 15° and continue all the way around the bracelet (**blue thread**). End the thread.

Step 31. Open one of the jump rings using two pairs of pliers. Insert the open jump ring into the hole of a KOLYMPOS loop on one end of the bracelet. Add one half of the toggle clasp set and close the jump ring. Repeat on the other side of the bracelet using the second jump ring and the other half of the toggle clasp set.

DESIGN OPTIONS

The components in this bracelet could easily be used to create other projects, such as a wider or narrower bracelet, earrings, pendant or a necklace.

Although every effort is taken to make these instructions as accurate as possible, variations in materials and individual stitching techniques may produce differences to the original design.

JOSEPHINE BRACELET ILLUSTRATIONS by CAROLYN CAVE



7mm cratered cab

- size 8/0 Miyuki Delica cylinder bead
- size 8/0 Miyuki round seed bead
- size 11/0 Miyuki seed bead
- size 15/0 rocaille bead

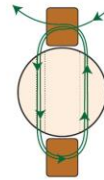


Figure 1

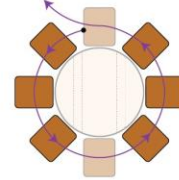


Figure 2

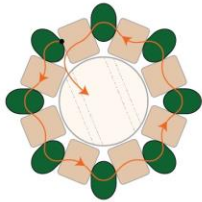


Figure 3

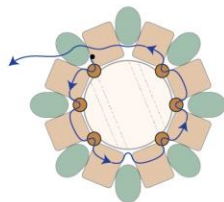


Figure 4

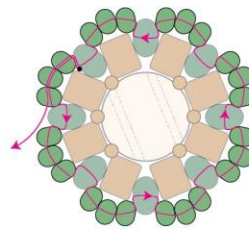


Figure 5

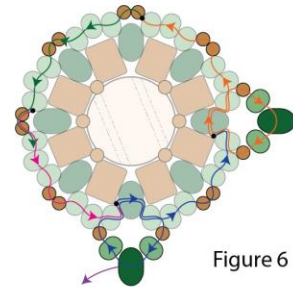


Figure 6

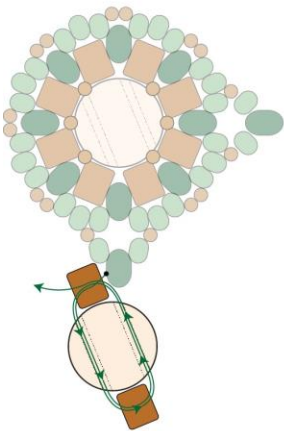


Figure 7

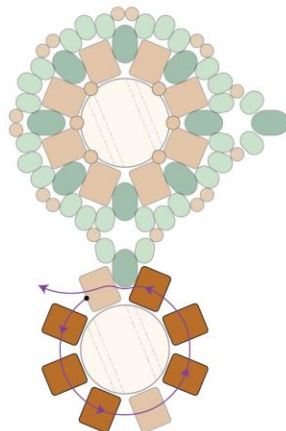


Figure 8

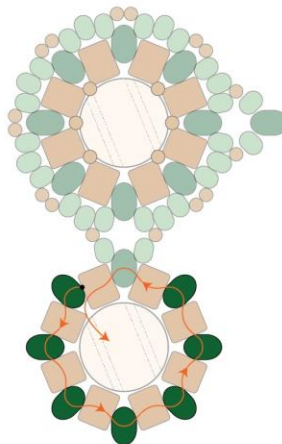


Figure 9

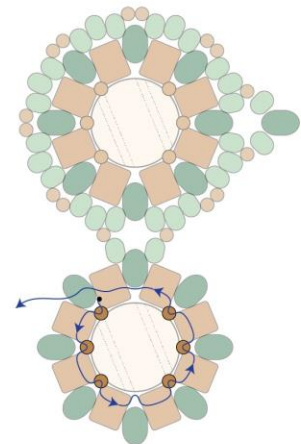


Figure 10

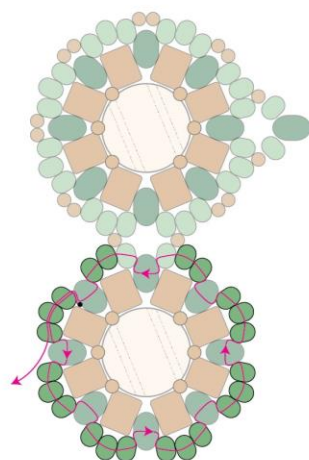


Figure 11

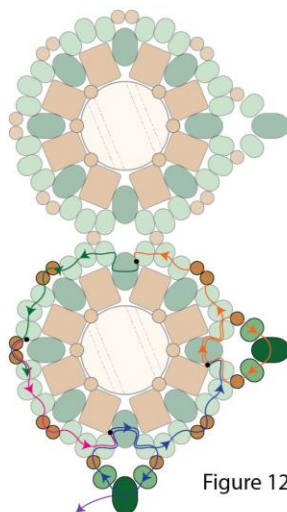


Figure 12

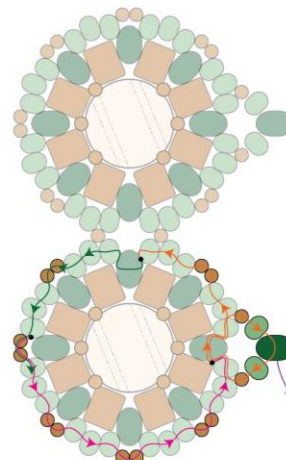


Figure 13

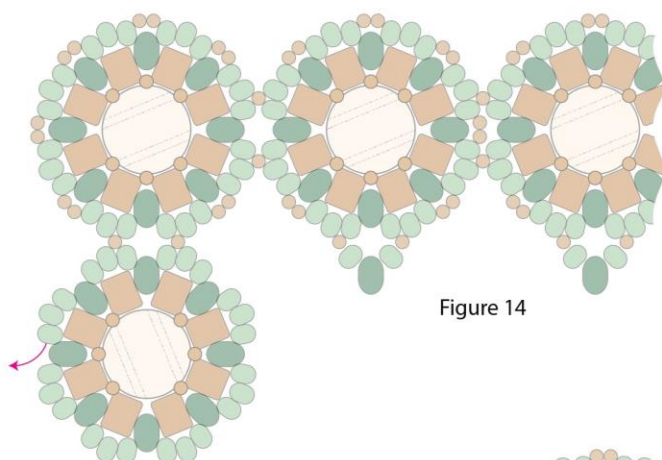


Figure 14

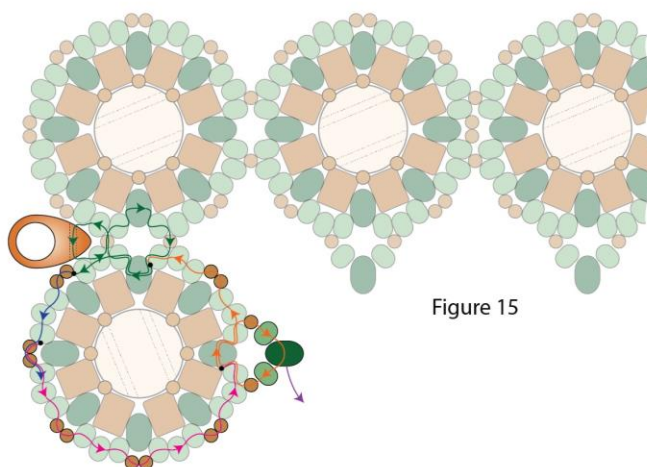


Figure 15

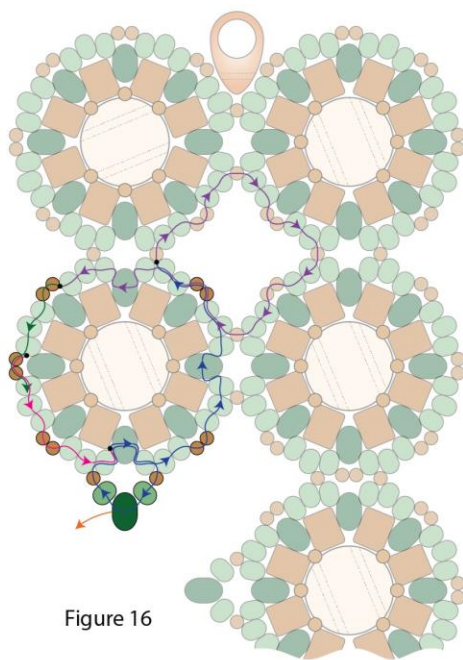


Figure 16

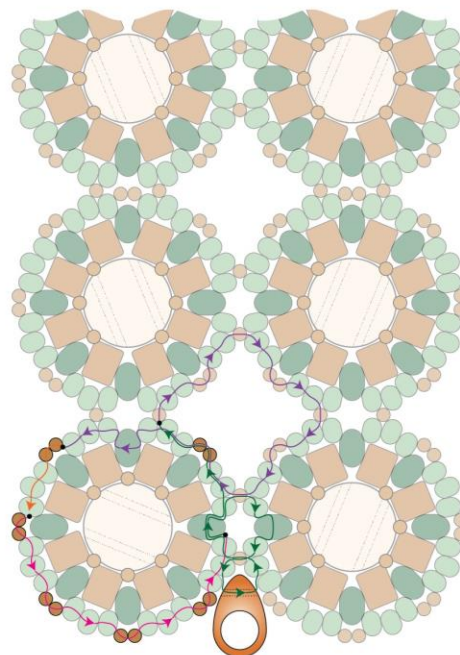


Figure 17

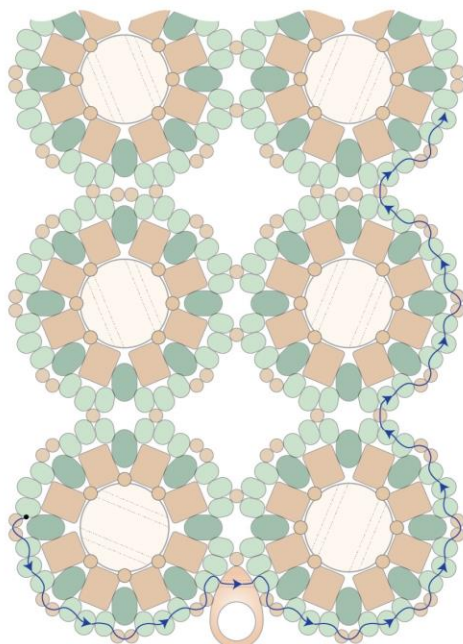


Figure 18