

DEMANTUR PENDANT AND EARRINGS

by Carolyn Cave

www.ladybeadledesigns.com



Skill level: Intermediate

Techniques: bead weaving with two needles, stitching with multi-hole beads

Finished size (beadwork only): Pendant – 3 x 1 ¼" (7.5 x 4.5cm); Earrings – 1 ¾ x 1 ½" (5 x 3.5cm)

MATERIALS for the pendant

2g size 15° seed beads
1g size 11° seed beads
0.5g size 8° seed beads
1 oval Candy oval bead (10 x 12mm)
4 Paisley Duo beads
12 Ginko beads
4 AVOLATHONISI Cymbal™ bead endings
1 size 5mm jump ring
Metal bail and finished chain of choice

MATERIALS for both

D weight beading thread
2 size 10 or 12 beading needles

MATERIALS for the Earrings

2g size 15° seed beads
1g size 11° seed beads
0.5g size 8° seed beads
2 Candy oval bead (10 x 12mm)
4 pcs 8 x 5 mm paisley duo beads
10 Ginko beads
4 AVOLATHONISI Cymbal™ bead endings
1 pair ear wires

Scissors or thread cutters
2 pairs of pliers (for working jump rings)

Please respect my designs by not reselling or altering my patterns in any way. Do not replace or modify text, images, names, logos, or URLs. Feel free to recreate this design for personal use and limited sales but not for mass production. Permission to teach this pattern is exclusive to customers of The Beadsmith.

DESIGNER NOTES

- Before using multi-hole beads, make sure that the holes are not blocked by excess glass or coating, and that the bead is well-formed.
- When a bead has more than one hole, it is important to know from which direction to pick it up, and through which hole, so that the bead sits correctly in the design. Refer to Figure A for the terms used.
- I really like working with two needles and one long thread. I find that the tension is very even this way and often you can finish off both sides of the beadwork at once.
- The right-hand needle will always be the one on the right, even if it was on the left in the step before. Position your work so that the threads cross horizontally in front of you.

PENDANT

Cut 48 inches (120cm) of beading thread and attach a needle to each end of the thread. **NOTE:** We will start stitching the pendant from the top.

FIGURE 1

Step 1. Pick up one size 11° seed beads and seven 15°. Sew through all of the beads again in the same direction, forming a ring. While the ring is still loose, slide it to the center of the thread. Pull the thread snug when the two thread ends are even. Sew through the 11°s for a third time (**blue thread**).

FIGURE 2

Step 2. With the right needle, pick up two 15°, one Ginko (leaf end) and one Paisley Duo (head from the outside) (**red thread**). Using the left needle, pick up two 15°. Sew through the unused hole of the Ginko (leaf end). Pick up one Paisley (head from the outside) (**green thread**). Position the Paisleys under the Ginko so they mirror each other, like the wings of a butterfly.

FIGURE 3

Step 3. With the right needle, pick up one 15°, one 11° and one 15°. Sew through the unused hole of the Paisley (tail from the inside) (**red thread**). With the left needle, pick up one 15°, one 11° and one 15°. Sew through the unused hole of the Paisley (tail from the inside) (**green thread**). Tie the two thread ends together using a secure square knot. Do not tighten yet.

Step 4. With each needle, sew out from between the two Paisleys towards the outer edges. Tighten the threads. With the right needle, pick up three 15°s and one 11° (**blue thread**). With the left needle, pick up three 15°s and sew through the 11° picked up by the other needle, in the same direction (**orange thread**).

FIGURE 4

Step 5. Place one AVOLATHONISI bead ending face up on your work surface with the holes running horizontally and the metal loop towards the **left**. With the right needle, pick up one 15°. Sew through the upper (first) hole of the AVOLATHONISI *from* the loop side. Pick up one Ginko (leaf end), two 15°s, one 11° and two 15°s. Change direction and sew through the empty hole of the Ginko (stem end), as well as the second AVOLATHONISI hole, *towards* the loop. Pick up one 15°, one 11° and one 15°. Sew through the third AVOLATHONISI hole *from* the loop side. Make sure these last three beads sit in front of the metal loop when the thread is pulled snug. Pick up one Ginko bead (leaf end), two 15°s, one 11° and two

©2023 DEMANTUR PENDANT AND EARRINGS by CAROLYN CAVE for the BEADSMITH

15°. Change direction and sew through the empty hole of the Ginko bead (stem end), as well as the last (fourth) AVOLATHONISI hole, *towards* the loop side (**green thread**).

Step 6. Place a second AVOLATHONISI face up on your work surface with the holes running horizontally and the metal loop towards the **right**. With the left needle, pick up one 15°. Sew through the upper (first) hole of the AVOLATHONISI *from* the loop side. Pick up one Ginko (leaf end), two 15°, one 11° and two 15°. Change direction and sew through the empty hole of the Ginko bead (stem end), as well as the second AVOLATHONISI hole, *towards* the loop. Pick up one 15°, one 11° and one 15°. Sew through the third AVOLATHONISI hole *from* the loop side. Make sure these last three beads sit in front of the metal loop when the thread is pulled snug. Pick up one Ginko (leaf end), two 15°, one 11° and two 15°. Change direction and sew through the empty hole of the Ginko (stem end), as well as the last (fourth) AVOLATHONISI hole *towards* the loop side (**red thread**). Push the findings under the 11°s and 15°s so they are between them and the Paisleys.

FIGURE 5

Step 7. Lay a Candy bead (dome side up) on your work surface with the holes running horizontally. With the right- needle, pick up one 15°. Sew through the upper hole of the Candy, from right to left. Pick up one 11°, one 8° and one 11°. Sew through the lower hole of the Candy, from left to right. Pick up one 15° (**green thread**).

Step 8. With the left- needle, pick up one 15°. Sew through the upper hole of the Candy, from left to right. Pick up one 11°, one 8° and one 11°. Sew through the lower hole of the Candy, from right to left. Pick up one 15° (**red thread**).

FIGURE 6

Step 9. Place the third AVOLATHONISI face up on your work surface with the holes running horizontally and the metal loop towards the **left**. With the right needle, sew through the upper (first) hole AVOLATHONISI *from* the loop side. Pick up one Ginko (leaf end), two 15°, one 11° and two 15°. Change direction and sew through the empty hole of the Ginko (stem end) as well as the second AVOLATHONISI hole *towards* the loop. Pick up one 15°, one 11° and one 15°. Sew through the third AVOLATHONISI hole *from* the loop side. Make sure these last three beads sit in front of the metal loop when the thread is pulled snug. Pick up one Ginko (leaf end), two 15°, one 11° and two 15°. Change direction and sew through the empty hole of the Ginko (stem end) as well as the last (fourth) AVOLATHONISI hole *towards* the loop side (**green thread**).

Step 10. Place the last AVOLATHONISI face up on your work surface with the holes running horizontally and the metal loop towards the **right**. With the left needle, sew through the upper (first) AVOLATHONISI hole *from* the loop side. Pick up one Ginko (leaf end), two 15°, one 11° and two 15°. Change direction and sew through the empty hole of the Ginko (stem end) as well as the second AVOLATHONISI hole, *towards* the loop. Pick up one 15°, one 11° and one 15°. Sew through the third AVOLATHONISI hole *from* the loop side. Make sure these last three beads sit in front of the metal loop when the thread is pulled snug. Pick up one Ginko (leaf end), two 15°, one 11° and two 15°. Change direction and sew through the empty hole of the Ginko (stem end), as well as the (last) fourth AVOLATHONISI hole *towards* the loop side (**red thread**).

Please respect my designs by not reselling or altering my patterns in any way. Do not replace or modify text, images, names, logos, or URLs. Feel free to recreate this design for personal use and limited sales but not for mass production. Permission to teach this pattern is exclusive to customers of The Beadsmith.

FIGURE 7

Step 11. With the right needle, pick up one 15°, one 11°, three 15°s and one Paisley (tail from the inside) (**orange thread**). With the left needle, pick up one 15° and sew through the 11° that was just added by the right needle, in the same direction. Pick up three 15°s and one Paisley (tail from the inside) (**blue thread**). Tie the two thread ends together using a secure square knot. Do not pull the thread too snug.

Step 12. With each needle, sew out from between the two Paisleys towards the outer edges. Pull the knot and threads snug. With the right needle, pick up one 15°, one 11° and one 15°. Change direction and sew through the second unused hole of the Paisley from the outside (**green thread**). With the left needle, pick up one 15°, one 11° and one 15°. Change direction and sew through the second unused hole of the Paisley from the outside (**red thread**).

FIGURE 8

Step 13. With the right needle, pick up one Ginko (stem end), two 15°s and one 11° (**orange thread**). With the left needle, sew through the Ginko (stem end) picked up on the right needle. Pick up two 15°s. Sew through the 11° picked up on the right needle, in the opposite direction, so the threads cross inside the bead (**blue thread**).

Step 14. With the right needle, sew through the two 15°s just picked on by the left needle, the Ginko and the head of the Paisley above it. Sew through the 15°, 11° and the next 15° that are along the inside of the Ginko. Sew through the tails of both Paisleys and the 15°, 11° and 15° under the Paisleys added in Step 12, heading towards the outside edge of the pendant (**green thread**). With the left needle, repeat the entirety of this step, but in mirror image (**red thread**).

FIGURE 9

Step 15. With the right needle, pick up two 15°s, one 11° and two 15°s. Sew through the two 15°s, 11° and two 15°s that are over the stem end of the first Ginko (**red thread**). Pick up one 15°, one 8° and one 15°. Sew through the two 15°s, 11° and two 15°s that are over the stem end of the second Ginko (**green thread**). Pick up one 15°, one 8°, one 15°, one Ginko (stem end), two 15°s, one 11° and two 15°s. Change direction and sew through the unused hole of the Ginko (leaf end). Pick up one 15°, one 8°, one 15° and sew through the two 15°s, 11° and two 15°s that are over the stem end of the third Ginko (**blue thread**). Pick up one 15°, one 8° and one 15°. Sew through the two 15°s, 11° and two 15°s that are over the stem end of the fourth Ginko (**orange thread**). Pick up two 15°s, one 11° and two 15°s. Sew through the first 15°, 11° and 15° that are between the Paisley and the AVOLATHONISI, continue into the Paisley (**pink thread**).

Step 16. Using the left thread, repeat Step 15 in mirror image (**blue thread**).

FINISHING

Step 17. Cross the threads over the knot between the Paisleys and follow the thread path made in Steps 15 and 16 through the edge of the beadwork. Sew to, and through, the two Ginkos just added to the side of the beadwork to secure. The extra thread adds some stability to the beads.

Step 18. End both threads by sewing through the beadwork, following only existing thread paths. Tie a few overhand knots along the way. Trim the thread.

©2023 DEMANTUR PENDANT AND EARRINGS by CAROLYN CAVE for the BEADSMITH

Step 19. Open the jump ring using two pairs of pliers. Slip it through the loop of 15°s at the top of the work. Add the metal bail and close the ring. Slip a chain through the bail and your new pendant is ready to wear.

EARRINGS

Step 20. Cut 24" (60cm) of beading thread and attach a needle to each end of the thread. Stitch Steps 1 to 6 using Figures 1 to 4 for reference to begin the earring.

FIGURE 10

Step 21. Lay a Candy bead dome side up on your work surface with the holes running horizontally. With the right needle, pick up one 15°. Sew through the upper hole of the Candy, from right to left. Pick up one 11°, one size 8°, one 11° and one 15°. Sew through the lower hole of the Candy, from left to right (**green thread**).

Step 22. With the left needle, pick up one 15°. Sew through the upper hole of the Candy, from left to right. Pick up one 11°, one 8°, one 11° and one 15°. Sew through the lower hole of the Candy, from right to left (**red thread**).

FIGURE 11

Step 23. With the right thread, sew through the 15°, 11°, 8° and 11° along the right side of the Candy. Sneak under the remaining 15° and sew through the upper hole of the Candy, from right to left. Continue sewing through the 15° on the other side, the hole of the AVOLATHONISI, the Ginko and the two 15°, 11° and two 15°s above the stem of the same Ginko (**green thread**). With the left needle, repeat the entirety of this step, but in mirror image (**red thread**).

FIGURE 12

Step 24. With the right needle, pick up one 15°, one 8° and one 15°. Sew through the two 15°s, 11° and two 15°s that are over the stem end of the fourth Ginko (**orange thread**). Pick up two 15°s, one 11° and two 15°s. Sew through the first 15°, 11° and 15° that are between the Paisley and the AVOLATHONISI, and then into the Paisley (**pink thread**).

Step 25. With the left needle, repeat Step 24, in mirror image (**blue thread**).

FINISHING

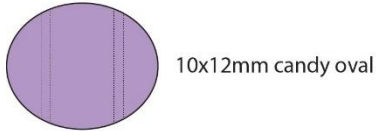
Step 26. Cross the threads over the knot between the Paisleys and follow the thread path made in Steps 24 and 25 through the edge of the beadwork. End the thread by sewing through the beadwork, following only existing thread paths. Tie a few overhand knots along the way. Trim the thread.

Step 27. Open the loop on one ear wire using two pairs of pliers. Slip it through the loop of 15°s at the top of the work. Check to see that it faces the correct way and close the loop.

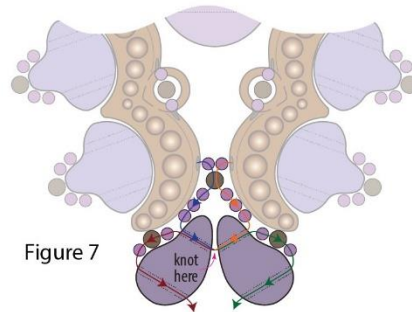
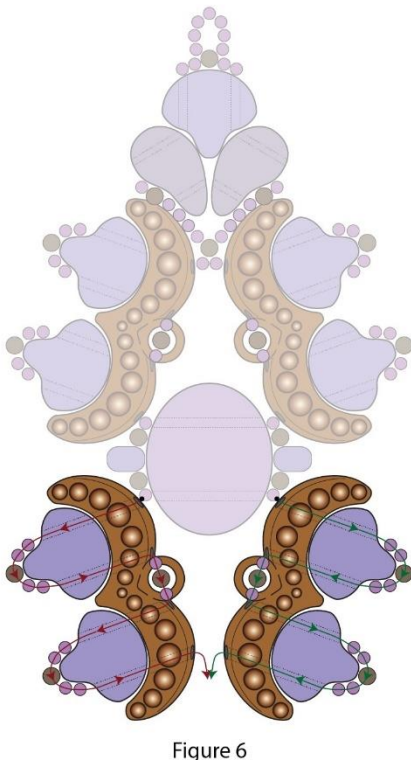
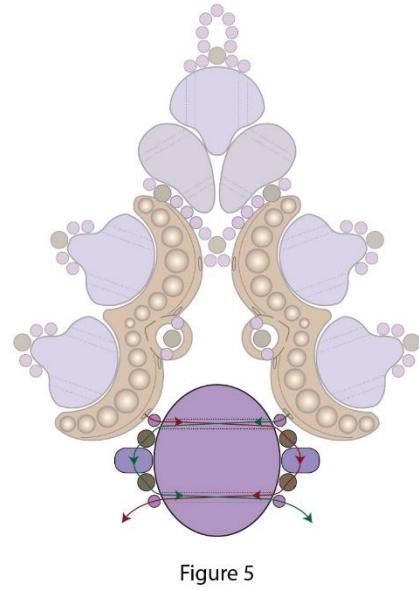
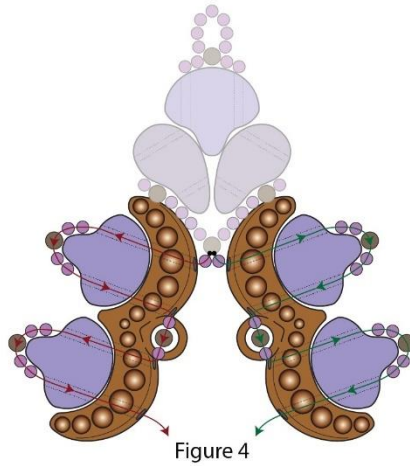
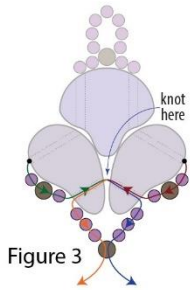
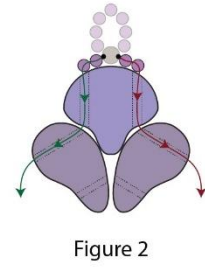
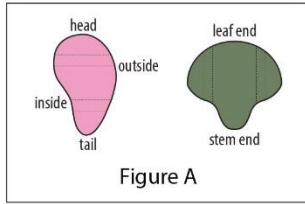
Step 28. Repeat all the earring steps to make a second earring.

DEMANTUR PENDANT AND EARRINGS

designed by Carolyn Cave
www.ladybeadledesigns.com



- size 8/0 seed bead
- size 11/0 seed bead
- size 15/0 rocaille



Please respect my designs by not reselling or altering my patterns in any way. Do not replace or modify text, images, names, logos, or URLs. Feel free to recreate this design for personal use and limited sales but not for mass production. Permission to teach this pattern is exclusive to customers of The Beadsmith.

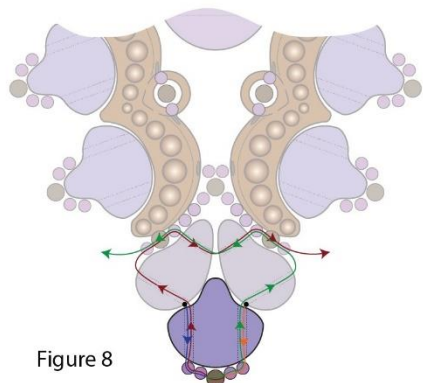


Figure 8

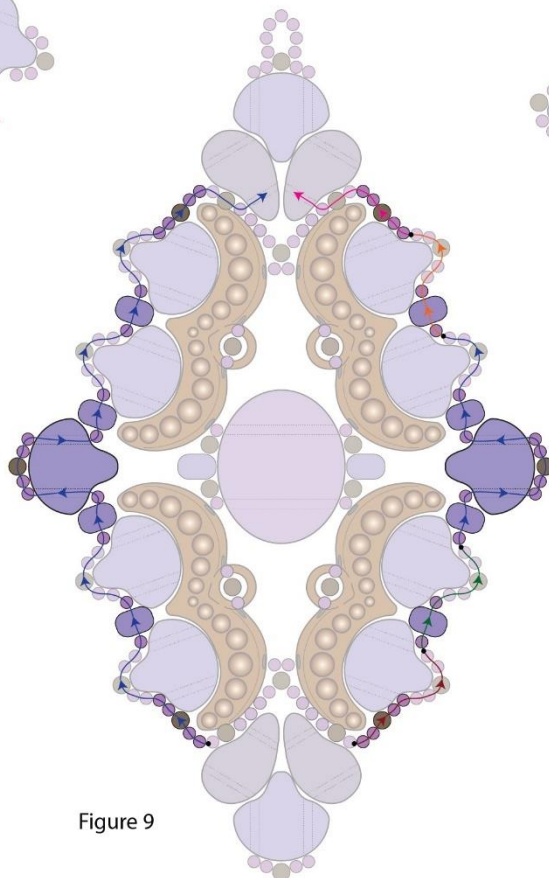


Figure 9

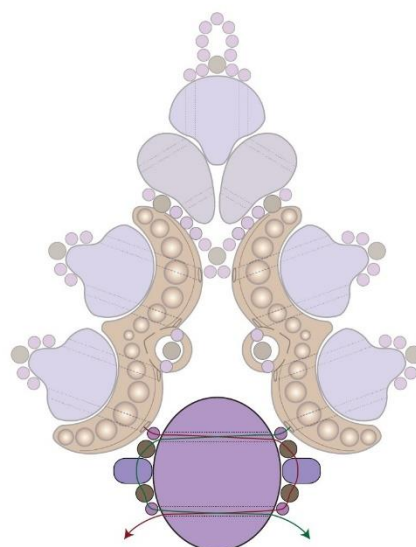


Figure 10

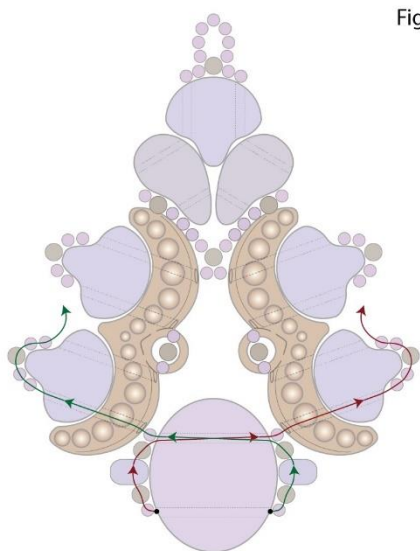


Figure 11

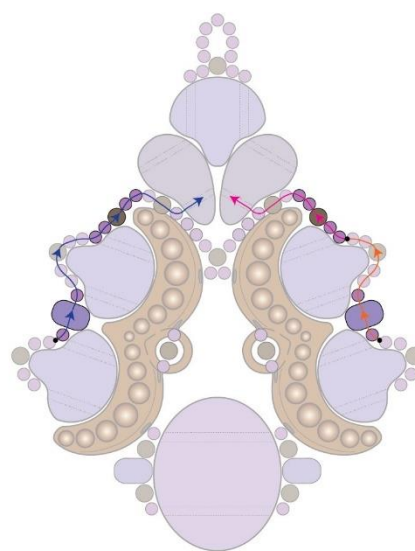


Figure 12

Please respect my designs by not reselling or altering my patterns in any way. Do not replace or modify text, images, names, logos, or URLs. Feel free to recreate this design for personal use and limited sales but not for mass production. Permission to teach this pattern is exclusive to customers of The Beadsmith.