



“Industrial” beaded bead

A cube-shaped beaded bead with Matubo Nib-Bits



Material (for one bead):

Matubo Nib-Bit (24 pcs)

Matubo Miniduo (24 pcs)

Matubo 8/0 (36 pcs)

Matubo 11/0 or 11/0 Japanese seed beads
(approx. 1,5 gram)

15/0 Japanese seed beads (approx. 2,5 grams)

20mm wooden or acrylic round core bead

Beading needle and thread

Difficulty: Advanced



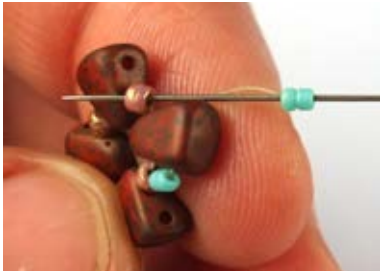
1) String one 11/0, one NB (narrow end), one 11/0, one NB (narrow end) ... total four of each.



2) Slide all the beads to the end of the thread and tie a square knot to form a circle. Then pass through the nearest 11/0.



3) Add two 15/0s and pass through the upper hole (wide end) of the nearest NB.



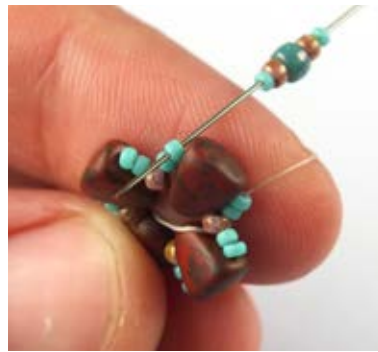
4) Add two 15/0s and pass through the next 11/0 in the row.



5) Repeat steps 3 and 4, until you reach the end of the row.



6) Go up through the first pair of 15/0s.



7) Add one 15/0, one 11/0, one 8/0, one 11/0 and one 15/0 and go down through the upper 15/0 from the next pair:



8) Add one Miniduo and go up through the upper 15/0 from the next pair:



9) Repeat steps 7 and 8 ...



10) ... until you reach the end of the row.



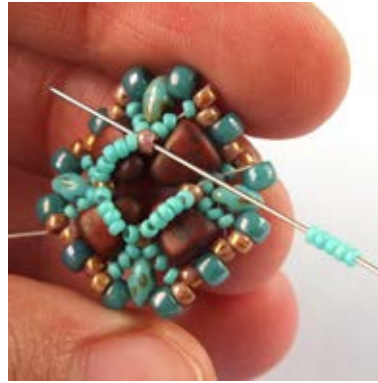
11) Pass through the nearest (15/0, 11/0, 8/0, 11/0) – as shown in the photo.



12) Add one 11/0 and one 8/0 and pass through the upper hole of the next Miniduo.



13) Add one 8/0 and one 11/0 and pass through the next group of (11/0, 8/0, 11/0).



18) Repeat step 17, until you reach the end of the row.



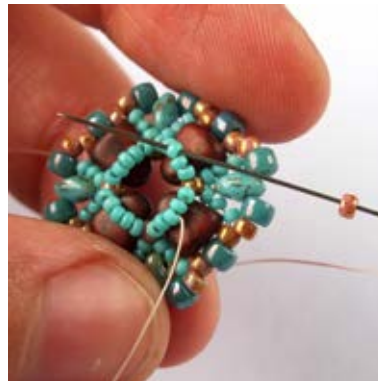
14) Repeat steps 12 and 13 ...



19) Pass through the first three 15/0s from the first group of five.

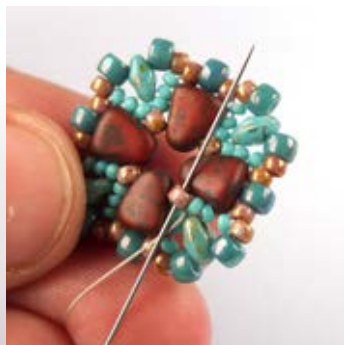


15) ... until you reach the end of the row.



20) Add one 11/0 and pass through the "middle" 15/0 from the next group of five.

16) Weave through beads to get to one of the 11/0s in the center:



21) Repeat step 20, until you reach the end of the row. Optionally you can weave through all the four new 11/0s.

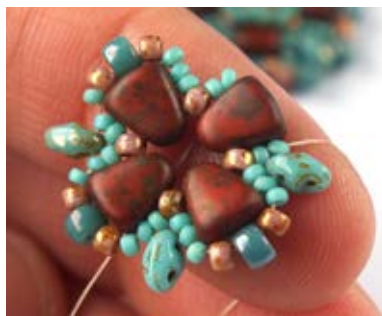


17) Add five 15/0s and pass through the next 11/0 in the row.



22) Tie a few half-hitch knots and cut off all the remaining thread. The first component is finished.

Now we will make another component and connect it to the previous one.



23) Start making another components (like in steps 1 – 22) – but in the last step of the third row (steps 7–10), instead of the group of (15/0, 11/0, 8/0, 11/0, 15/0) ...



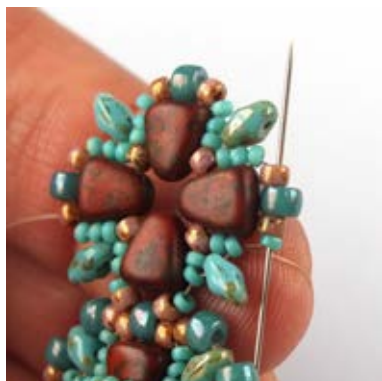
24) ... add just one 15/0 and one 11/0 and then pass through the 8/0s above one of the NBs on the previous component (as shown in the photo).



25) Add one 11/0 and one 15/0 and go down through the upper 15/0 from the next pair (like in step 7)...



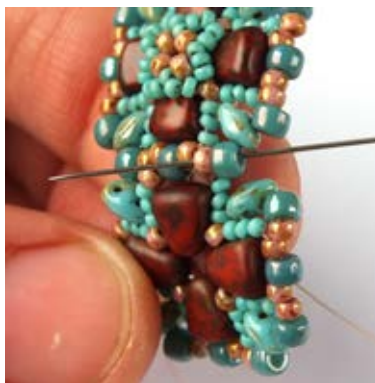
26) ... and then finish the row (like in step 10).



27) Pass through the nearest (15/0, 11/0, 8/0, 11/0) (like in step 11).



28) And then finish the row (like in steps 12 – 15) – but on the edge where the two components are connected, you won't be adding new pairs of (8/0, 11/0) or (11/0, 8/0). You will be using the pairs from the previous component.



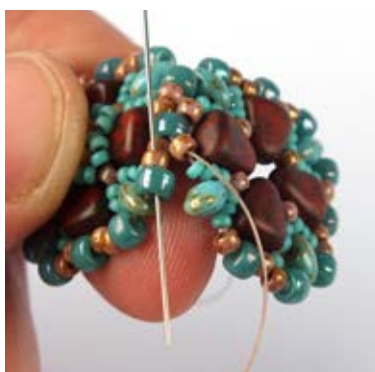
29) Now you reached the edge where the two components are connected. The thread is exiting from the upper hole of the MD. Pass through the nearest (8/0, 11/0) on the previous component ...



30) ...then through the next 11/0 on the new component, through the "shared" 8/0 above the NB ...



31) ... and through the next 11/0 on the new component ...



32) ... and through the (11/0, 8/0) on the previous component ...

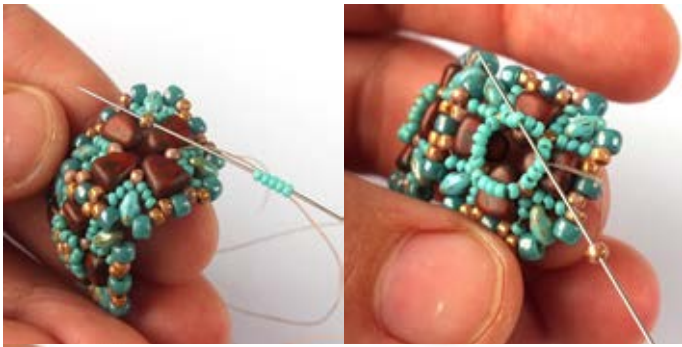


33) ... and through the upper hole of the next MD on the new component.



34) Now the two components are thoroughly connected. Finish the last row on the new component (like in step 15) ...

35) ... and then weave through beads to get to one of the 11/0s in the center and finish the component (steps 16-22).



36) Now add another component by repeating steps 23 - 35



37) Now we have three components – three sides of the cube. And we need to make another – fourth component and connect them to the previous ones.

Start making the new component (steps 1 – 6).



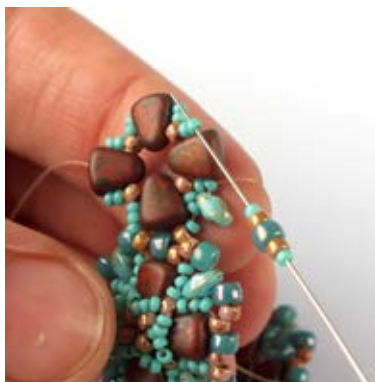
38) Add one 15/0 and 11/0 and then pass through the 8/0 above the NB on one of the previous components.



39) Add one 11/0 and 15/0 and go down through the upper 15/0 from the next pair:



40) Add one MD and go up through the upper 15/0 from the next pair:



41) Add (15/0, 11/0, 8/0, 11/0, 15/0) and go down through the upper 15/0 from the next pair:



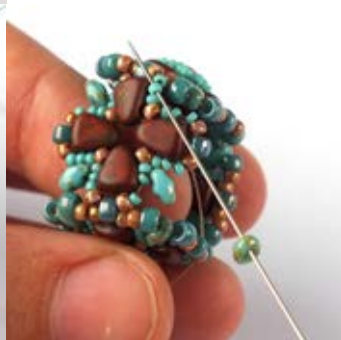
42) Add one MD and go up through the upper 15/0 from the next pair:



43) Add one 15/0 and one 11/0, then pass through the 8/0 above the NB on the nearest one of the previous components. Then add one 11/0 and one 15/0 and go down through the upper 15/0 from the next pair on the new component.



44) Finish the row like in steps 40 – 42.





45) Pass through the next (15/0, 11/0, 8/0, 11/0) on the new component ...



50) ... and through (8/0, 11/0) on the nearest previous component ...



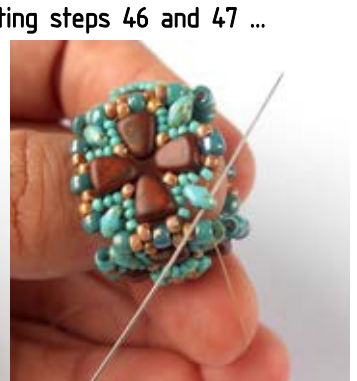
46) ... through 11/0 and 8/0 on the nearest previous component ...



51) ... and through the next 11/0 on the new component, through the "shared" 8/0 and through another 11/0 on the new component.



47) ... and through the upper hole of the next Miniduo on the new component.



52) Finish the row by repeating steps 46 and 47 ...

... 48 and 49 ...



48) Add one 8/0 and one 11/0 and pass through the next (11/0, 8/0, 11/0) on the new component.



... and 50 and 51.



49) Add one 11/0 and one 8/0 and pass through the upper hole of the next Miniduo on the new component ...





53) Then decorate the center of the new component, like in steps 16 - 22.
The base ring is finished.



54) Put the core bead inside. It might require some force to do so, but don't worry, it will fit in.



55) Start making another new component (like in steps 1 - 6).

56) Add one 15/0 and one 11/0 and pass through the 8/0 above the NB on one of the previous components.



57) Add one 11/0 and one 15/0 and pass through the upper 15/0 from the next pair of 15/0s on the new component.



58) Add one Miniduo and go up through the upper 15/0s from the next pair of 15/0s on the new component.



56) Add one 15/0 and one 11/0 and pass through the 8/0 above the NB on one of the previous components.

59) Repeat steps 56 - 58 ...



60) ... until you reach the end of the row. At the end of the row add one last MD and go up through the upper two 15/0s (as shown in the photo).



61) Pass through the nearest 11/0 on the new component, through the "shared" 8/0 and through the next 11/0 on the new component.



62) Pass through the next 11/0 and 8/0 of the nearest previous component.



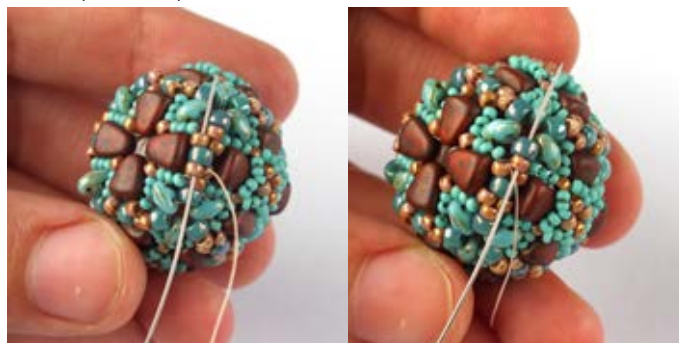
63) Pass through the upper hole of the next Miniduo on the new component.



64) Pass through the nearest 8/0 and 11/0 on the next "previous" component.



65) Repeat steps 61 - 64 ...



66) ... until you reach the end of the row.



67) Decorate the center of the new component like in steps 16-22.



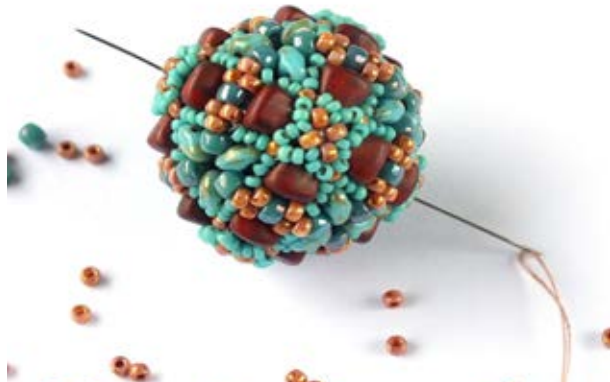
68) Repeat steps 55 – 67 ...



69) ... on the other side of the bead.



70) Tie a few half-hitch knots and cut off the remaining thread. The bead is finished.



Colorways:



Matubo Nib-Bit 23980/84110
Matubo 8/0 00030/27000
Matubo Miniduo 23980
TOHO 11/0 29AF Silver Lined
Frosted Black Diamond
Miyuki 15/0 190 Steel



Matubo Nib-Bit 23980/94106
Matubo 8/0 03000/15726
Matubo Miniduo 53410/85001
TOHO 11/0 703 Matte Color Mauve
Mocha
15/0 TOHO Seed Beads
457 Gold Lustered Green Tea



Matubo Nib-Bit 03000/85455
Matubo 8/0 00030/85106
Matubo Miniduo 03000/85455
TOHO 11/0 83 Metallic Iris Brown
15/0 TOHO Seed Beads
51 Opaque Lt. Beige



Matubo Nib-Bit 00030/26440
Matubo 8/0 63030/86805
Matubo Miniduo 03000/85455
TOHO 11/0 2604F Semi-Glazed
Turquoise
Miyuki 15/0 412 Opaque Turquoise



Matubo Nib-Bit 93140/85695
Matubo 8/0 63130/15001
Matubo Miniduo 6330/43400
Matubo 11/0 03000/65491
Miyuki 15/0 412FR Matte Opaque
Turquoise AB