

Generic, Step-by-Step Approach to Making Jewelry Using a WigJig Jewelry Tool



The steps involved in starting a new jewelry making project are essentially the same for every jewelry project. From an overview perspective the first thing you need to do is to make your jewelry wire components out of practice wire and measure the amount of practice wire you used to learn how much wire is actually required to make your component. We do this step so that when you get ready to use your expensive wire, you will be able to cut the correct length of wire on your first try. In general, with every jewelry making project, you will: 1. cut your wire, 2. measure the wire, 3. make a loop in the end of the wire with the flush cut, 4. hold this loop and straighten your wire, 5. make your wire component starting with just two pegs in your jig and adding pegs as you go, and 6. when you have completed wrapping your wire on your jig then you need to cut the excess wire and measure the amount of excess wire. Your goal should be to have about 1/2 inch of wire left over as scrap when you are done. Here are the detailed steps involved.

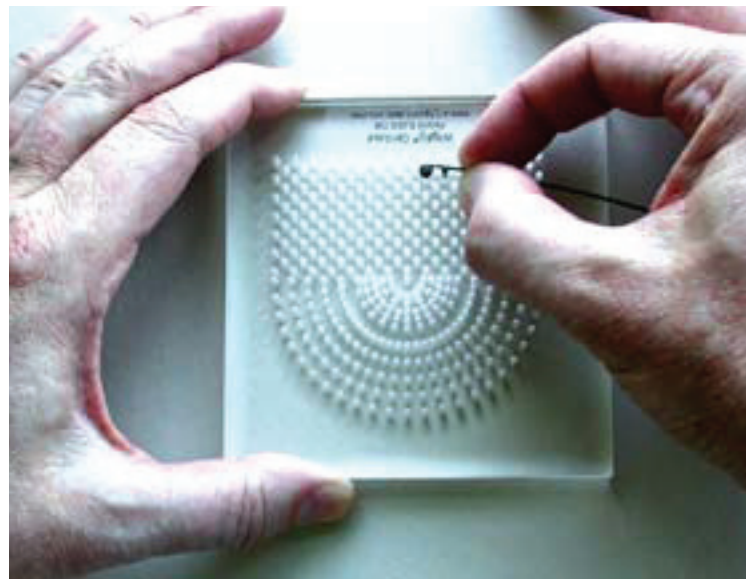
Step 1: Cut a length of practice wire that you estimate will be 1-2 inches longer than you need.

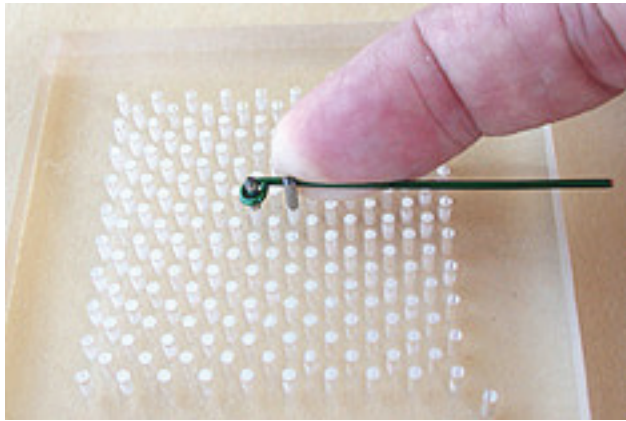
Step 2: Measure the actual length of this wire and record the length.

Step 3: Make a loop in one end of this wire using your round nose pliers or Fine Step Jaw Pliers. (We prefer the Fine Step Jaw Pliers for making initial loops because the first step gives us a loop the size of the metal pegs for the WigJig Delphi, Cyclops or Centaur and the second step gives us a loop the size of the metal pegs for the Olympus, Olympus-Lite or Electra.) When making your loop, be sure to use the end of the wire with the flush cut and not the sharp end. If both ends of your wire are sharp, cut one end off about 1/8" from the end being certain to leave the flush side of the cut on the piece of wire you plan to use. For some people it may be a good idea to cut both ends of the wire off flush to avoid possibly cutting yourself on the sharp end of the wire.

Step 4: Now, while holding your wire by the loop you just made, pull the wire through the jaws of your nylon jaw pliers several times until it is straight.

Step 5: At this point our practice wire is ready to be shaped on your jig. Start with just pegs 1 and 2 from your pattern. Leave all the other pegs off the jig, out of your way. Place the initial loop that you made in Step 3 onto peg 1 and shape the wire against/around peg 2. Push the wire far enough that the wire will rest immediately next to the empty hole waiting for peg 3 with no pressure on the wire. This is important!





You must release your grip on the wire to test if the wire has been pushed far enough. There are many ways to push the wire against peg 2. The important concept is that the unused wire must remain straight. The technique that works best for us is to push the wire and guide the wire with the tip of the index finger on your dominant hand while you move/twist the jig with your non-dominant hand. Pushing the wire with the finger tip of your index finger on your dominant hand as close to peg 2 as possible will help make your components as consistent as possible. If the wire gets bent at the wrong location, remove

it from the jig and straighten the wire with your nylon jaw pliers, then replace the wire on the jig. If you can master the above 5 steps, making wire components on a jig will be easy. These steps are appropriate for soft or 1/2 hard wire. Remember, you are not done pushing the wire until the wire rests immediately adjacent to the empty hole for the next peg with no pressure on the wire.

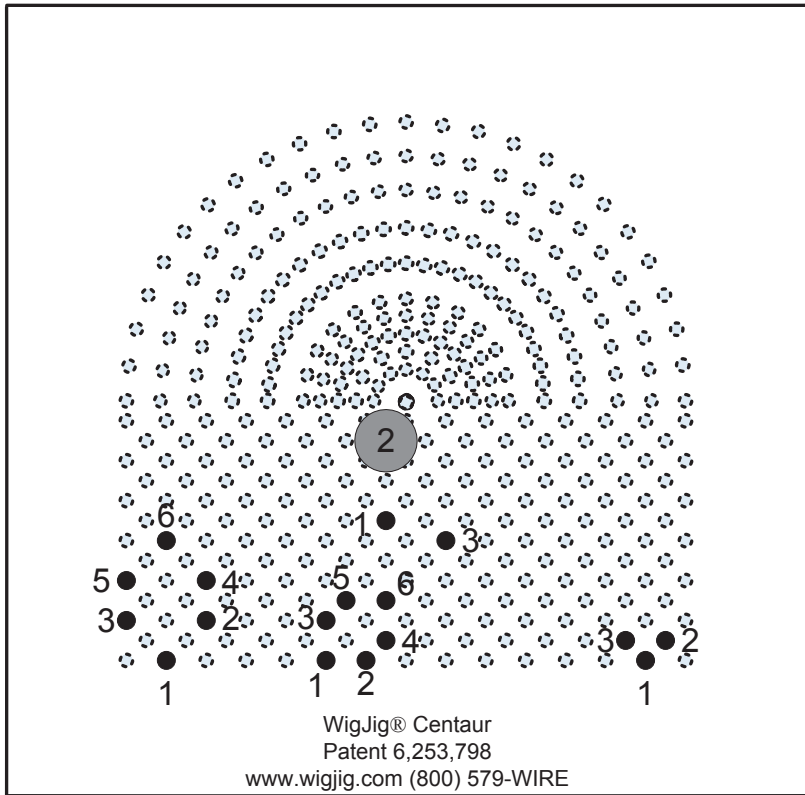
Step 6: Making your wire component continues by adding a single peg to your pattern and bending your wire against/around this new peg, leaving the wire adjacent to the empty hole for the next peg in the pattern with your hands removed from the wire. Continue adding one peg at a time, pushing the wire and testing to see if you pushed far enough until you have all the pegs in your pattern.

When you have added the last peg to the pattern and wrapped the wire against/around this peg as required, you are ready to remove the wire from the jig. If you have done this correctly, when you remove the wire from the jig, it will remain in the shape set by your pattern. (If you haven't done this correctly your wire might spring into a new shape. If you get the new shape, start over and remember that you need to push the wire, remove your grip on the wire and test to see if you pushed far enough, then push some more if necessary until the wire stays where it is supposed to with no pressure applied.) Now you are ready to cut the excess wire. Using your flush cutters, with the flat side of the cutter toward the finished piece, cut the excess wire and using your bent chain nose pliers close the final loop. Squeeze/flatten the finished piece with your nylon jaw pliers to harden and set the design.

At this point we need to measure how much excess practice wire we just cut off. If you have only 1/2", your length of wire is perfect. If you have significantly more, adjust your length of wire so that when you are done you have about 1/2" of excess wire.

Please note that for many designs, it may actually be easier to make the design in your good wire. Practice wire is almost universally soft wire. Wire components that do not include a spiral are often easier to make in 1/2 hard wire. At present only jewelry wire made of precious metals (gold, silver, gold-filled, etc.) can be purchased as 1/2 hard. For this reason, you may find that it is easier to be consistent when making your wire components with 1/2 hard gold, gold-filled or sterling silver wire.

WigJig® Jewelry Making Jigs



Notes:

1. Straighten Wire

2. Cut Wire

3. Make a loop in one end of wire

4. Position 2 pegs in jig

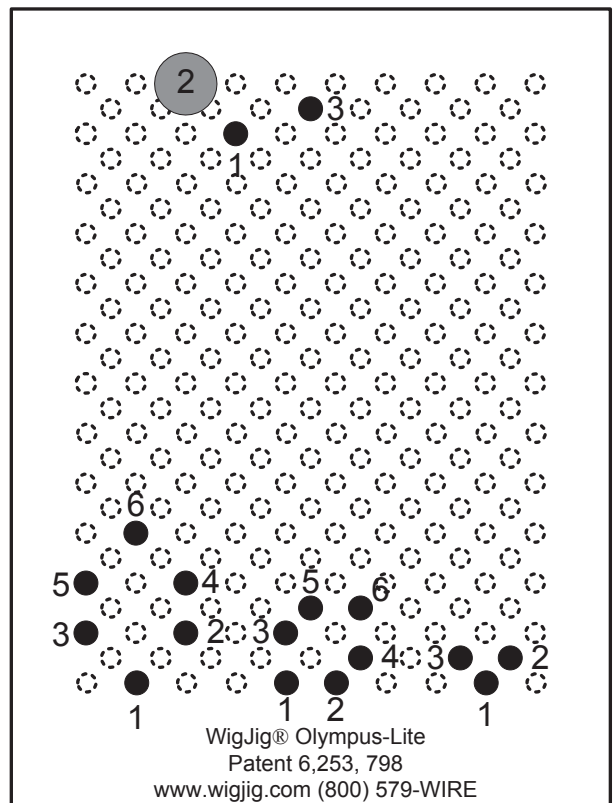
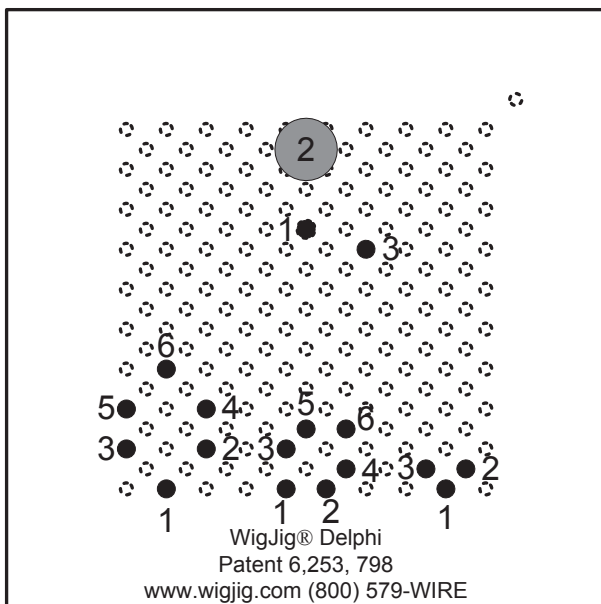
5. Place loop on peg 1 and wrap wire around peg 2

6. Add peg 3 and continue wrapping wire

For some wire components, the finished piece may lay flatter if you flip the wire component over after each loop.

LEGEND:

- = Regular Metal Peg for the Delphi & Centaur
- = Regular Metal Peg for the Olympus-Lite
- = 5/16" Super Peg for that Jig



Celtic Knot Earrings

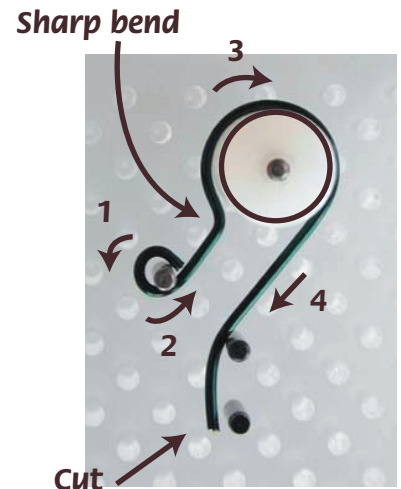
Suggested for the Wigjig® Delphi



Wigjig Delphi, 1/4" Super Peg, round nose pliers, flush cutters, chain nose pliers (flat or bent), nylon jaw pliers (optional), 30" of 20G wire, 2 small beads, 2 head pins.

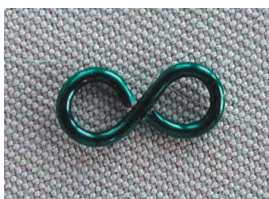


Cut 3" of 20G wire, and form a starting loop at one end, using round nose pliers. Grasp wire 1/8" below loop with chain nose pliers, and make a sharp 90 degree bend. Place loop on jig, and follow the arrows to form the ear wire. Clip wire tail, and harden/flatten with nylon jaw pliers or the Wacketdown. Make two ear wires and set aside.



Cut 6" of 20G wire, and form a starting loop at one end, using round nose pliers. Place loop on jig, and follow the arrows to form the link. Clip wire tail, and harden/flatten with nylon jaw pliers or the Wacketdown. Make two links and set aside.

Variation: Pegs can be placed vertically rather than on the diagonal to make a slightly larger dangle.

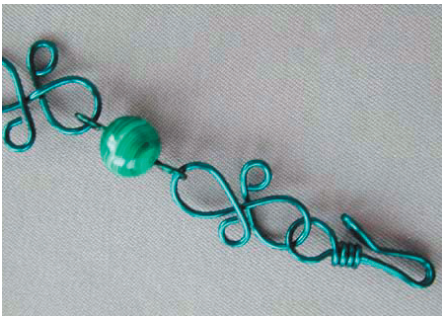


Make two Figure Eight Loops and two bead dangles.

Use Figure 8 connector to attach top loop of link to ear wire loop. Attach bead dangle directly to bottom loop of link to finish.

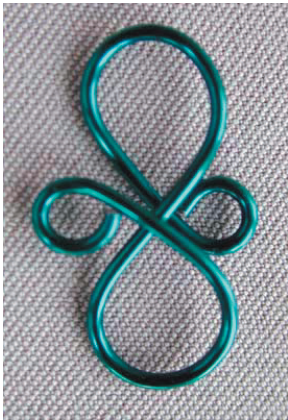
Spiral Link Bracelet

Suggested for the Wigjig® Olympus



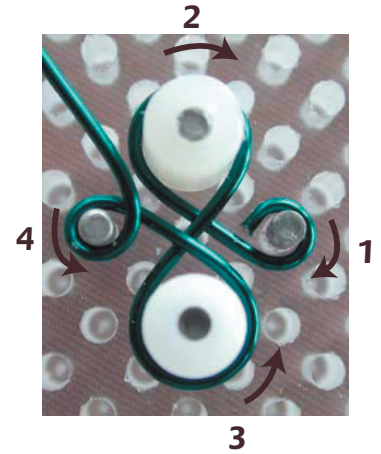
Wigjig Olympus, Super Pegs, round nose pliers, flush cutters, chain nose pliers (flat or bent), nylon jaw pliers (optional), master coiler (optional), 30" of 18G wire, 20" of 20G wire, accent beads.

- 1 To make links, cut 4" of 18G wire, and form a starting loop at one end, using round nose pliers. Place loop on jig, and follow the arrows to form the link. Clip wire tail, and harden/flatten with nylon jaw pliers or the Wacketdown. Set aside.



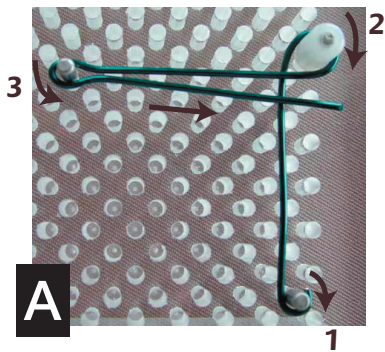
- 2 Wrap beads in wire, placing eye loops at both ends.

Wrapped Bead

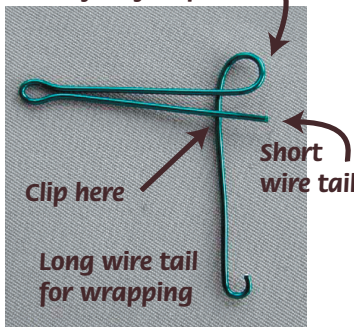


1/4" Super Pegs

3/16" super peg



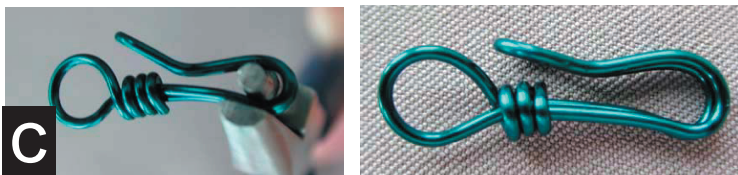
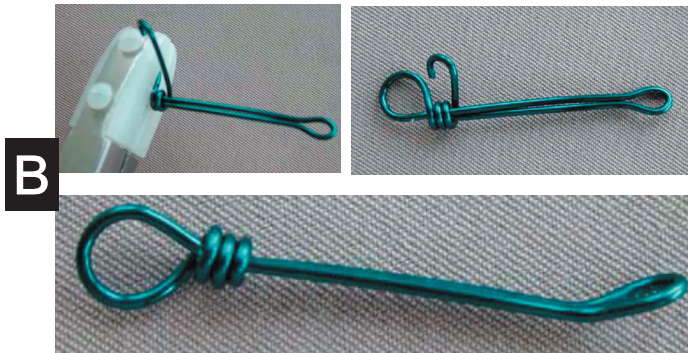
Grasp this loop in nylon jaw pliers



- 3 A. Cut 6" of 18G wire, form a starting loop, and follow the arrows to form the hook. Clip short wire tail. Grasp loop with nylon jaw pliers, and wrap long wire tail around the base of loop several times. Clip wire tail, Adjust loop to rest directly on top of neck (eye loop)

B. Squeeze neck together with nylon jaw pliers, and bend tip upward slightly.

C. Grasp with master coiler, and bend neck around round jaw to form hook.



- 4 Starting with a Spiral Link at one end, assemble bracelet, alternating spiral links and wrapped beads. Slide hook into outside loop of first Spiral Link to finish.

Spiral Diamond Necklace

Suggested for the WigJig® Cyclops



Step 1: Cut a piece of 20 gauge soft wire 7.5 inches long (as you become more experienced you will be able to use 18 gauge wire.)

Step 2: Make a loop in one end of this wire.

Step 3: Straighten the wire using your nylon jaw pliers.

Step 4: Position pegs 1 and 2 in your jig as shown at right. Place the initial loop on peg 1 and wrap the wire around peg 2 so that it rests adjacent to the hole for peg 3.

Step 5: Remove the wire from the jig, add peg 3 and position the wire on the jig on pegs 1 and 3. Now wrap the wire around peg 2 so that it rests adjacent to peg 5.

Step 6: Add peg 5. Remove the wire from the jig and replace in the mirror image position. Wrap the wire around peg 5 as you did around peg 2 in step 4, repeat steps four and 5, adding pegs as you go until all 7 pegs are completed and your wire looks as shown at right.

Step 7: Remove the wire from your jig and then cut any sharp end off your wire tail leaving 3 1/2 to 4" of wire. Then using your round nose pliers make a very small loop at the end of the wire. Using your chain nose pliers bend the wire around this small loop to form a spiral. When completed your wire component should appear as shown below-right.

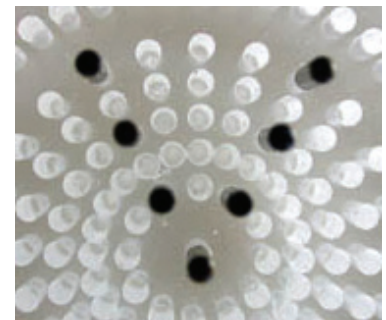
Step 8: Cut 8 two inch segments of commercial chain.

Step 9: Connect a segment of commercial chain to either side of your wire component at the loops formed around peg 6 and 7 using a wrapped bead link and one of your beads.

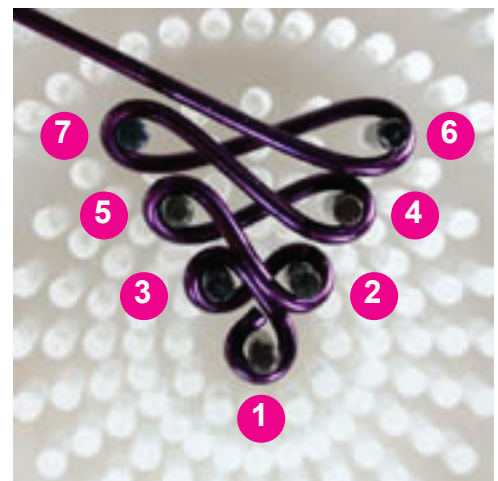
Step 10: Continue building your chain by connecting segments of commercial chain using wrapped bead links until you have connected four segments of chain to either side of your spiral diamond wire component.

Step 11: Connect the final segments of commercial chain to your clasp on either side using wrapped bead links. This should make a necklace about 24 inches long.

Step 12: Connect a bead to the bottom of your spiral diamond wire component using a head pin. Now hold your necklace at arms length and admire the finished product.



Peg Pattern for WigJig Cyclops



Flemish Spiral Necklace

Suggested for the WigJig® Delphi



Step 1: Cut a segment of wire 2 1/2 inches long. For your first effort use 20 gauge wire. As you become experienced you can increase your wire size to 18 or 16 gauge.

Step 2: Make a loop in one end of this wire using your round nose pliers or step jaw pliers.

Step 3: Straighten this wire using your nylon jaw pliers.

Step 4: Position two metal pegs and two 3/16" Super Pegs in your jig as shown below-right. Place your initial loop on peg 1 and wrap the wire around pegs 2, 3 and 4 as shown below.

Step 5: Remove the wire from the jig and using your round nose pliers or step jaw pliers, complete the final loop in your wire component.

Step 6: Cut the excess wire leaving this final loop open so that we can slide chain onto this wire component via this open loop.

Step 7: Make a total of 5 of these components in either the size of this first one, or in the smaller size shown by peg positions 1-4S.

Step 8: Cut 12 one inch segments of commercial chain.

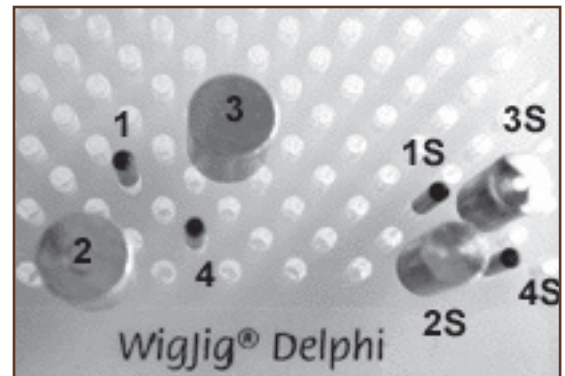
Step 9: Slide the end link of two segments of chain onto each of your five wire components. Position the chain so that the two chain segments are opposite one another on the wire.

Step 10: Now we need to wrap fine gauge wire around the center of this wire component. First, cut 5 segments of 22 or 24 gauge wire about 2 1/2 inches long. Make a "U" shaped bend about 1/2 inch from the end of this wire. Open the initial loop in your wire component using your chain nose pliers.

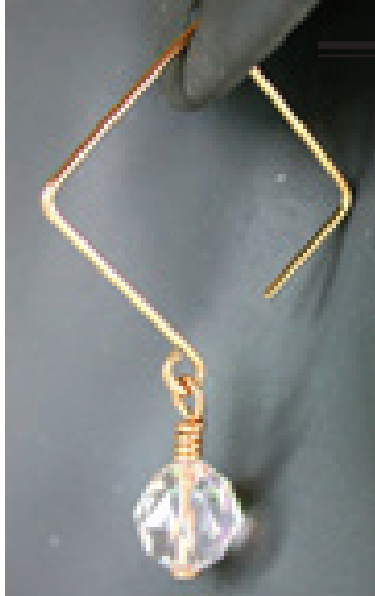
Step 11: Slide the "U" shaped bend into position at the center of your wire component and wrap the fine gauge wire around about 3 times. Hold the wire with your chain nose pliers and squeeze the wire flat after each wrap. Cut the excess wire and tuck in the cut end.

Step 12: Now connect each of these five segments of wire using a wrapped bead link. Use 22 or 24 gauge wire to make the wrapped bead link. Use another pair of wrapped bead links to connect that last two segments of wire to either end of your chain.

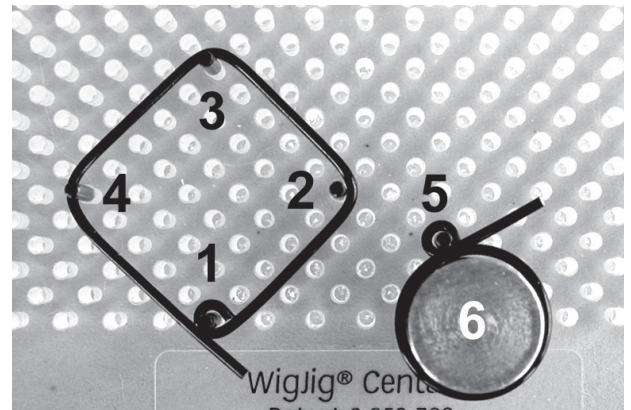
Step 13: Now we are ready to attach our clasp. Use two more wrapped bead links to attach your clasp. Select the size of your beads for these links according to the length of necklace that you want. (In the necklace at top-right, the last two wrapped bead links used 2mm beads.)



Two Easy Ear Wires



Suggested for the WigJig® Centaur



Step 1: Cut a 4 inch segment of wire

Step 2: Make a loop in the end of this wire with the flat or flush cut using your round nose pliers.

Step 3: Straighten the wire using your nylon jaw pliers.

Step 4: Position pegs 1 and 2 in your jig as shown above. Place the initial loop on peg 1 and bend the wire against peg 2 so that with no pressure applied, the wire will rest adjacent to the hole for peg 3.

Step 5: Add peg 3 and bend the wire against peg 3 so that it rests against the hole for peg 4.

Step 6: Add peg 4 and bend the wire against peg 4 as shown.

Step 7: Remove the wire from your jig and cut the excess wire near the initial loop.

Step 8: Using your bent chain nose pliers, grasp the initial loop and twist it 180 degrees so that it is outside the square.

Step 9: Position your wire on a bench block or anvil and hammer the wire with a chasing hammer or nylon hammer.

Step 10: Add a bead dangle on a head pin and you are done with a Square Earring.

Simple Earring

Step 1: Cut a 2 1/2 inch segment of wire

Step 2: Make a loop in the end of this wire with the flat or flush cut using your round nose pliers.

Step 3: Straighten the wire.

Step 4: Position regular metal peg 5 and a 1/2 inch Super Peg, Peg 6, in your jig as shown. Place the initial loop on peg 5 and wrap the wire around peg 6.

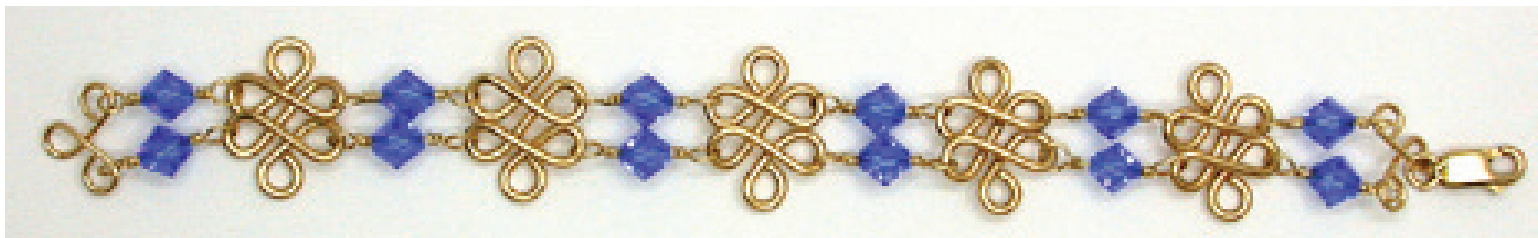
Step 5: Remove the wire from your jig and cut the excess wire near the initial loop.

Step 6: Position your wire on a bench block or anvil and hammer the wire with a chasing hammer or nylon hammer.

Step 7: Add a bead dangle on a head pin and you are done with a Simple Earring.

DELUX DUPLEX BRACELET

Suggested for the Wigjig® Olympus-Lite



Step 1: Cut a piece of 20 gauge wire 4 inch long.

Step 2: Make a loop in the end of the wire with the “flush” cut.

Step 3: Straighten this wire segment with your nylon jaw pliers.

Step 4: Position pegs 1 and 2 in your jig. Place your initial loop on peg 1 and wrap the wire around peg 2.

Step 5: At this point you need to remove the wire from the jig and add peg 3 to your pattern. Replace the wire on the jig with the initial loop on peg 1 but with the loop made on peg 2 being placed on peg 3 instead.

Step 6: Now wrap the wire around peg 2 again, leaving the wire adjacent to the hole for peg 4. Continue in this manner until all six pegs have been used.

Step 7: Remove this duplex wire component from the jig, cut the excess wire and close the final loop.

Step 8: Make five duplex wire components using the above instructions.

Step 9: Now you need to make the 2:1 wire component. Cut a piece of wire 2 inches long. Make a loop in the end and straighten this wire.

Step 10: Position pegs 7 and 8 in your jig and place your initial loop over peg 7 and wrap the wire around peg 8 so that it rests adjacent to the hole for peg 9.

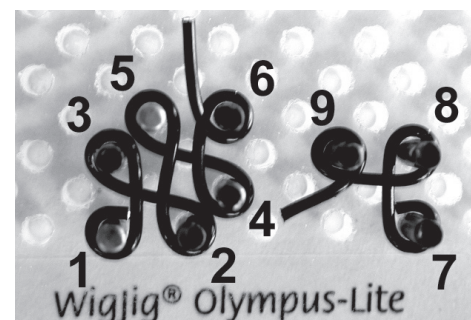
Step 11: Add peg 9 to the pattern and wrap your wire around peg 9. Remove the wire from the jig and cut the excess wire. Close the final loop with your chain nose pliers.

Step 12: Make two of the 2:1 wire components.

Step 13: Now begin assembly of this bracelet using two wrapped bead links to connect two of the duplex wire components together. Connect all five duplex wire components using this approach.

Step 14: Connect the two end duplex wire components to a 2:1 wire component in the same manner.

Step 15: Connect your clasp to one of the 2:1 wire components using a jump ring, or a figure 8 connector.





WigJig Chandelier Earrings

Suggested for the WigJig® Delphi



Tools Required:

WigJig Delphi
Flush Cutter
Round Nose Pliers
Bent Chain Nose Pliers
Nylon Jaw Pliers (recommended)

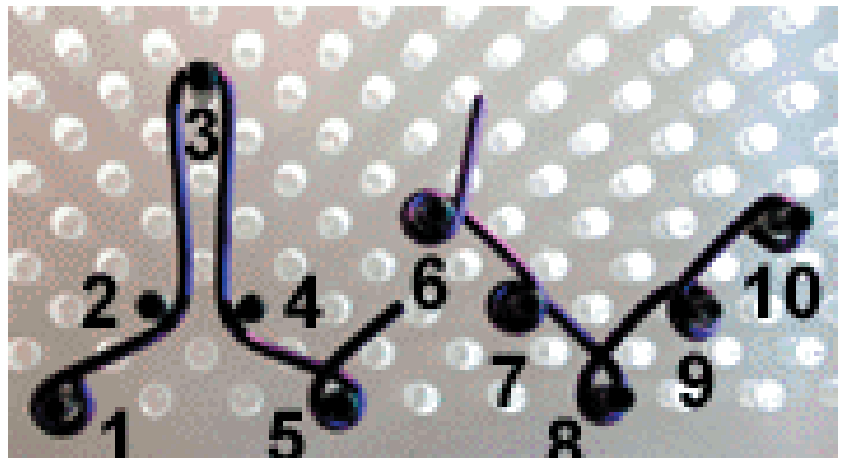
Materials Required:

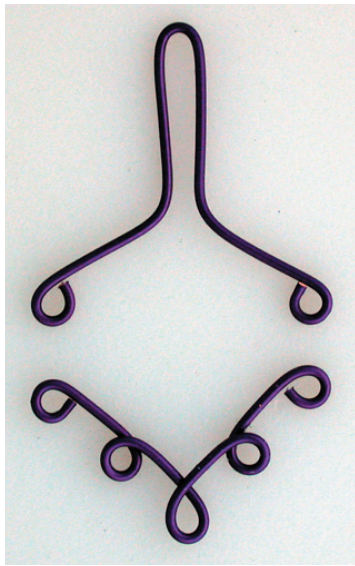
12 inches 20g wire
4 inches 24 g wire
10 6mm beads
10 head-pins
1 pair commercial ear wire findings

Step 1: Cut and straighten four 3 inch long segments of 20 gauge wire.

Step 2: Make a loop in one end of each segment of wire. The loop needs to be large enough to fit over the 1/16" peg of the WigJig Delphi.

Step 3: Position ten metal pegs in a WigJig Delphi as shown at right. Place the loop you made in a wire segment on Peg 1 and wrap the wire as shown around pegs 1 through 5.

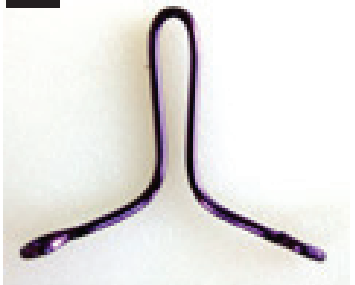




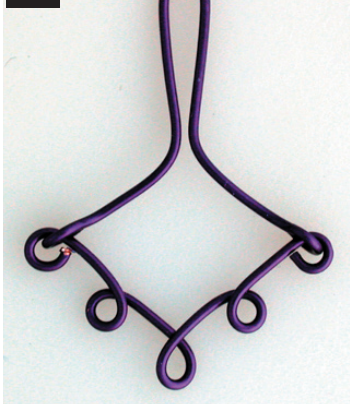
A



B



C



Step 4: Place the loop from a second piece of wire on Peg 6 and wrap the wire around pegs 6, 7, and 8. Then remove the wire and place it back on the jig in mirror image position with the initial loop now on peg 10. Complete this wire component by wrapping the wire around peg 7 then 6.

Step 5: Remove the wire from the jig and cut the excess. Close all end loops on both wire segments.

Step 6: Now we need to shape the top wire component so that it can connect to the bottom, "V" shaped component. Using the tips of your round nose pliers grasp the wire at the beginning and ending loops and bend it as shown at left. (Image A)

This effectively converts both of these loops into eye loops.

Step 7: Now, while holding this top wire component in the fingers of your non-dominant hand, use your bent chain nose pliers to grasp each loop at the end and twist it 90 degrees. When completed the wire component should appear as shown at left. (Image B)

The loops in this component can not be seen because they are perpendicular to the camera's view.

Step 8: Now open the ending loops on both the top and bottom wire components and connect the two components together. (Image C)

Once the two components are connected, close all four loops.

Step 9: Using a head-pin and a 6mm bead, add a bead dangle to each of the 5 loops at the bottom.

Step 10: Open the loop in a commercial ear wire finding and connect the finding to the top of the wire component. Then close the loop in the finding.

OPTIONAL : Cut a 2 inch segment of 24g wire and wrap this wire around the top wire component as shown in the completed earrings, upper right. After each loop, squeeze the wire flat with your bent chain nose pliers.

