



Paisley Duo and Ginko Component Cuff

By LESLIE ROGALSKI

www.leslierogalskibeadworks.com

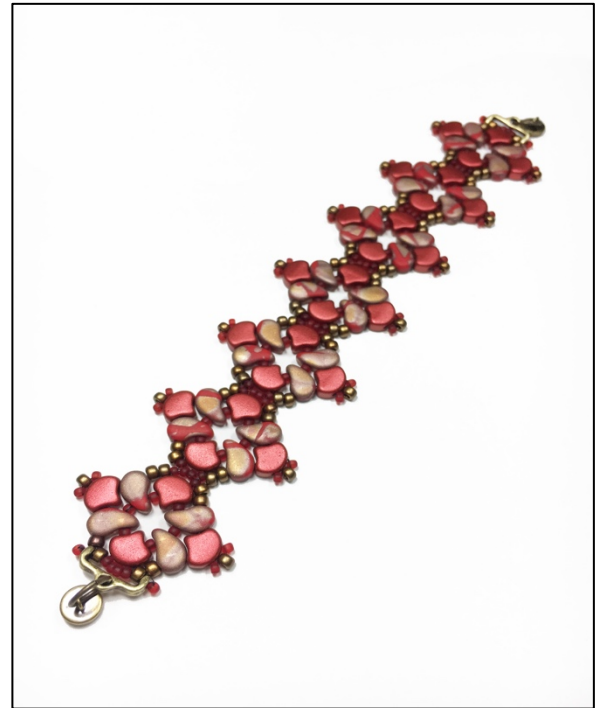
Paisley Duos play well with Ginko beads and seed beads in this easy, component-based bracelet. So many variations are possible from bead colors and finishes to ending options!

SKILL LEVEL: Advanced beginner

TECHNIQUES to know: ending and adding thread, familiarity with two-holed beads.

MATERIALS for up to a 7-inch (10.75cm) bracelet before clasp.

Each component is about 7/8 inch (20mm). Make seven components for a 6.25-inch bracelet, eight for a 7-inch bracelet, including the Cymbal™ endings but before adding jump rings and a clasp. Length can also be adjusted by adding jump rings to the Cymbal before adding the clasp.



28-32 Ginko beads

28-32 Paisley Duos

5g size 8° seed beads

3g size 11° seed beads

*2 MARONIA II Cymbal endings (or 2 SKALOTI II)

*2 open jump rings (5mm)

*Clasp of choice

Size 12 needle

Fireline™ 6lb.

Scissors or thread Zap

Pliers for jump rings

*For an alternate adjustable bracelet ending as shown at the end of this tutorial, you will need these in place of the above starred items: 1 set Partially Finished Bracelet Ends, 4 closed 4mm jump rings, and 2 open 5mm jump rings.

NOTE: You may prefer to end and add thread throughout this project if working with a long length is not your thing.

FIGURE 1

Step 1. (SOLID LINE) On a 2.5 yard piece of thread string a stopper leaving a 10 inch tail, used later to attach the ending.

Step 2. String a Paisley Duo (PD) concave tip (a), an 11°, a PD convex tip, an 11°, a Ginko tip end (b), and four 11°. Sew into the Ginko wide end.

Step 3. String an 11° and a PD concave tip, an 11°, a PD convex tip, and 11°, a Ginko tip (c), and four 11°. Sew into the Ginko wide end. String an 11°. Knot the working thread and tail.

Step 4. (DOTTED LINE) Sew around the thread path again to exit through all four top 11°s.

FIGURE 2

Step 5. (SOLID LINE) String two 8°s (a) and sew through the wide concave end of the next PD. String an 11°, a Ginko tip (b), an 11°, an 8° and an 11°. Sew into the Ginko wide end.

Step 6. String an 11° and sew through the next PD convex wide end. String two 8°s and sew through the four 11°s over the bottom Ginko (c). String two 8°s and sew through the next PD concave wide end.

Step 7. String an 11°, a Ginko tip (d), an 11°, an 8°, and an 11°. Sew into the Ginko wide end. String an 11° and sew through the PD convex wide end. String two 8°s and sew through all four 11°s on the top Ginko.

Step 8. (DOTTED LINE) Sew through the entire thread path again and exit through three 11°s on the top Ginko.

FIGURE 3

Step 9. (SOLID LINE) String an 11°, a Ginko wide end (a), an 11°, a PD concave tip (b), an 11°, a PD convex tip (c), an 11°, and a Ginko tip (d). String four 11°s and sew through the Ginko wide end. String an 11°, a PD concave tip, an 11°, a PD convex tip and an 11° (e).

Step 10. Sew through the Ginko tip (a) and string an 11°. Sew through the middle two 11°s in the group of four 11°s on the Ginko in the previous component.

Step 11. (DOTTED LINE) Repeat the thread path halfway around through the beads starting with the first 11° strung in Step 9, to exit the four 11°s on the top Ginko (d).

FIGURE 4

Step 12. (SOLID LINE) String two 8°s (a) and sew through the wide concave end of the next PD (b). String an 11°, a Ginko tip (c), an 11°, an 8° and an 11°. Sew into the Ginko wide end.

Step 13. String an 11° and sew through the PD wide convex end (d). String two 8°s and sew through all four 11°s below the bottom Ginko (e) of this component. String two 8°s and sew through the PD wide concave end (f).

Step 14. String an 11°, a Ginko tip (g), an 11°, an 8°, and an 11°. Sew into the Ginko wide end. String an 11° and sew through the PD convex wide end (h). String two 8°s and sew through all four 11°s on the top Ginko.

Step 15. (DOTTED LINE) Repeat the thread path around to exit three of the top 11°s.

Step 16. Repeat from Step 9 to add components for your desired length, exiting the last one through all four 11°s and one 8°.

DESIGN OPTION: Make a shorter length of only four or five components and attach a Partially Finished Bracelet End as an adjustable closure! See info after Step 28 on an alternate ending.

FIGURE 5

ATTACH FIRST END ELEMENT

Step 17. Make sure you are exiting between two 8°s as directed in Step 16. String out through the left leg of the Cymbal ending. String an 11° and sew back through the leg.

Step 18. Sew through the 8° first exited, through the next four 11°s and one 8°, and out the other leg of the ending.

Step 19. String an 11° and sew back through the leg and the 8° exited.

Step 20 Repeat the thread path once more to firm up and secure the ending (not shown in the illustration).

Step 21. Weave thread into the beadwork to secure, and trim.

FIGURE 6

ATTACH OTHER END ELEMENT

Step 22. Thread a needle on the tail at the other end of the bracelet. Sew through the beads to exit between two of the 8°s on the end Ginko.

Step 23. Repeat Steps 17-21 to attach the ending.

Step 24. Use jump rings to attach a clasp section to each ending. Voila!

FIGURE 7
SIMPLE JUMP RING END OPTION

Step 25. Complete your last component and exit through the two 8°s.

Step 26. (SOLID LINE) String four 11°s, an 8°, and a closed ring. Sew back through the 8°. String four 11°s and sew through the four 11°s atop the Ginko.

Step 27. (DOTTED LINE) Repeat the thread path through the new beads of Step 26, and exit through two 8°s into the beadwork. Secure thread and trim.

Step 28 Repeat Steps 22-24 at the other end of the bracelet. Use jump rings to attach your clasp to the closed rings.

ENDING VARIATION

For an adjustable length version use partially finished bracelet ends! Make five components with closed jump ring endings (FIGURE A). Add dangle beads for fun! (FIGURE B) Only one end component is shown in the illustration for brevity.

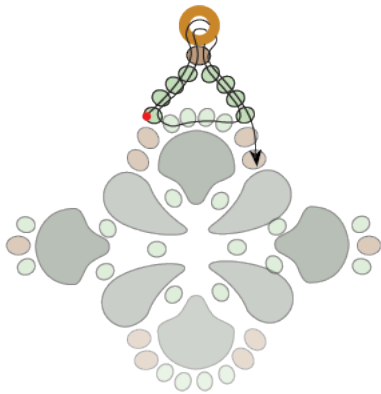


FIGURE A



FIGURE B

Alternate ending materials:

one set partially finished bracelet ends

4 closed 4mm jump rings

2 open 5mm jump rings



PAISLEY GINKGO COMPONENT CUFF ILLUSTRATIONS
BY LESLIE ROGALSKI

FIGURE 1

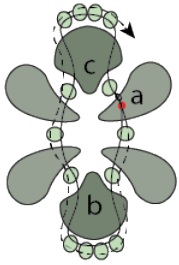


FIGURE 2

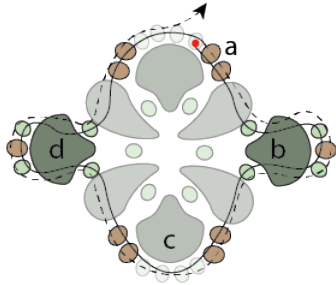


FIGURE 3

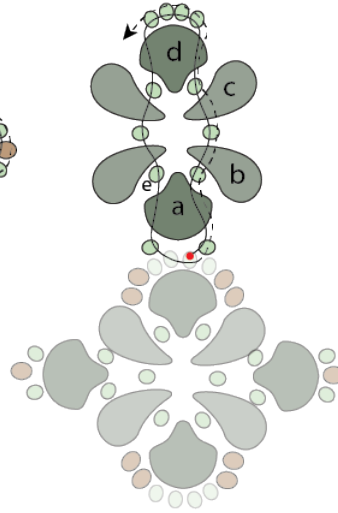


FIGURE 4

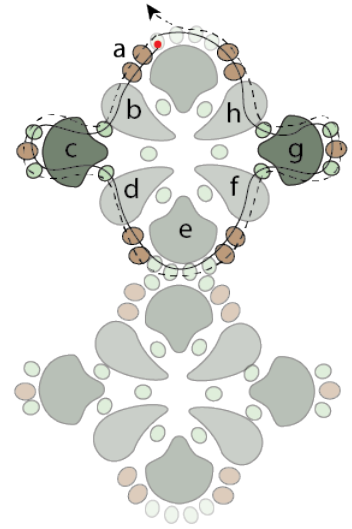


FIGURE 5

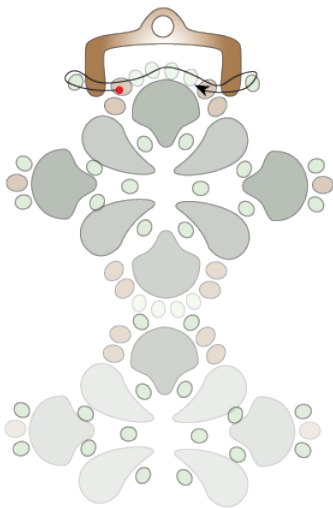


FIGURE 6

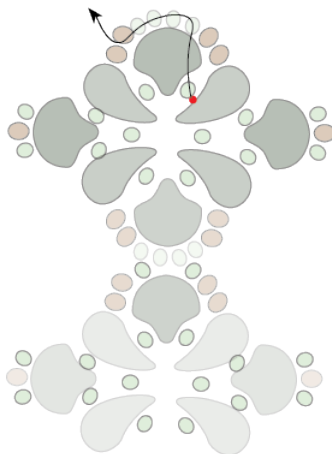


FIGURE 7

